



View real time and historical data

- Customizable data retention
- 1-year data retention by default with a 15-minute granularity

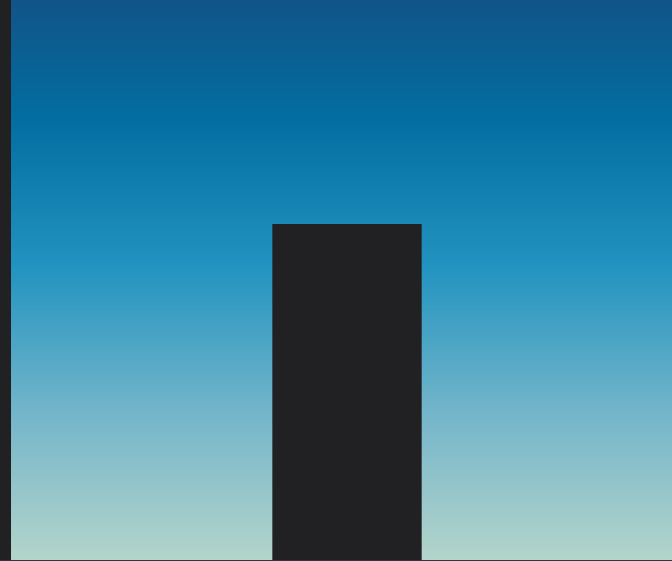
Export and share your Grafana results

- Share results from your custom charts, tables, and dashboards.
- Contribute your favorite dashboards, defined data sources, and customized metrics to the E-Series Grafana GitHub project.



Monitor different data sources in one location

- Monitor other systems and applications alongside your E-Series data
- Incorporate data from servers, switches, and other data sources (NoSQL, ObjectStore Databases)



NetApp® E-Series + Grafana

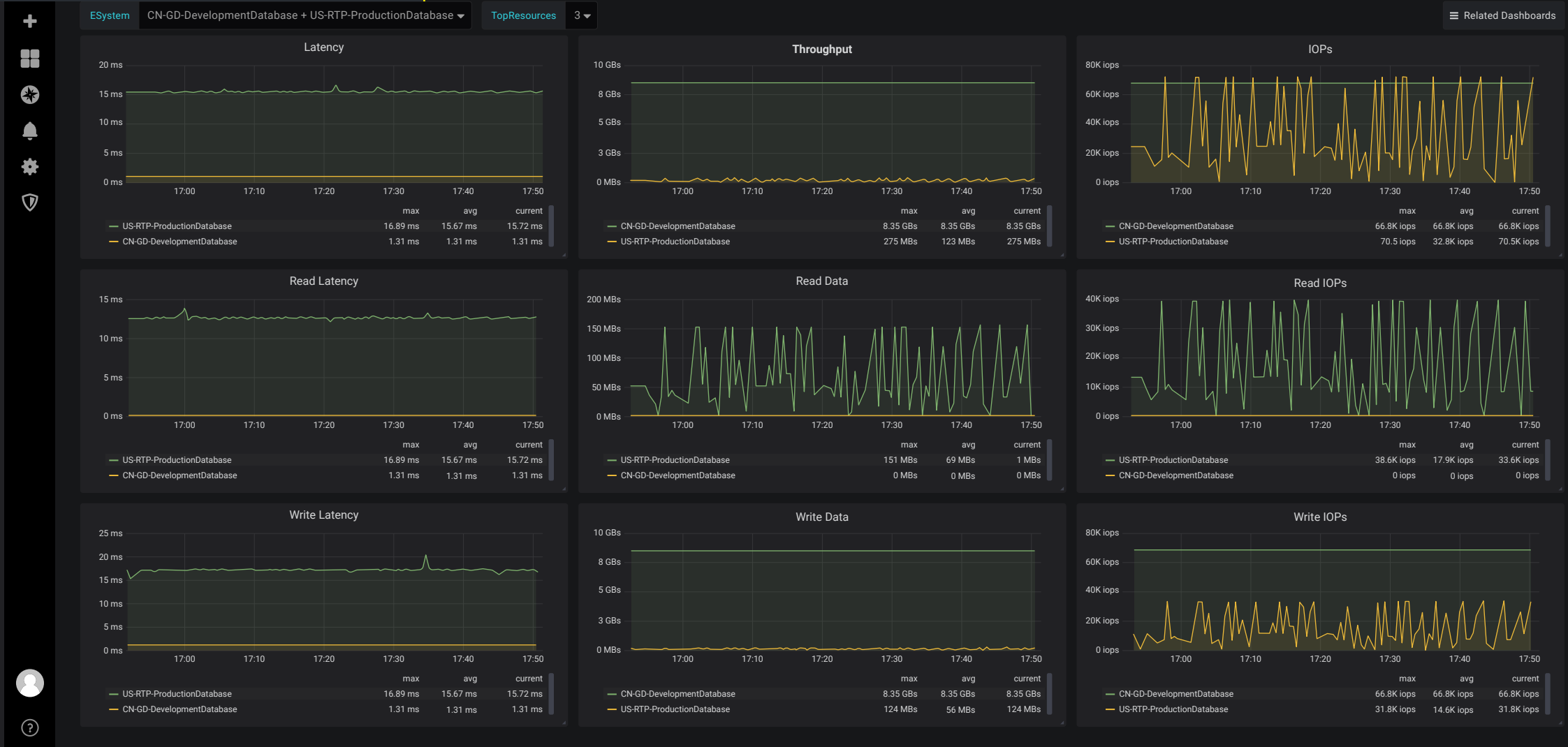
The NetApp E-Series Performance Analyzer: Grafana-based monitoring for your complete storage infrastructure.

- Grafana is an open-source data visualization tool providing time series analytics and monitoring
- The E-Series Performance Analyzer is an all-in-one, fully automated deployment
- The solution is simple to deploy and requires minimal configuration



Customizable metrics

- Customize your performance tables and charts easily through the tool's intuitive design
- Get the information you want and generate new charts based on existing historical data
- View performance monitoring at the application level
- Assemble your customizable metrics in a personalized dashboard



Simplicity in deployment and management

- Customizable installation and effortless extensibility provide for a solution that is easy to use
- Fast and simple installation allows you to deploy our E-Series Performance Analyzer solution without delay
- Minimal configuration required and pre-defined dashboards included

Customizable and scalable

- User-defined dashboards allow you to view your data the way you want
- Create tables and charts of metrics that are most critical to you
- Compatible with new and legacy E-Series systems
- Easily supports 100 systems out of the box

Monitor and analyze

- E-Series system performance metrics now available in a range of vibrant charts and tables through the E-Series Performance Analyzer
- Monitor real time data to stay on top of the latest activity with your system
- View historical data to analyze trends over time

Share your dashboards and metrics with other users

- Supports a variety of data sources allowing for a more complete view of your system performance
- Share and publish your dashboards
- Available for download through the E-Series Grafana project on GitHub