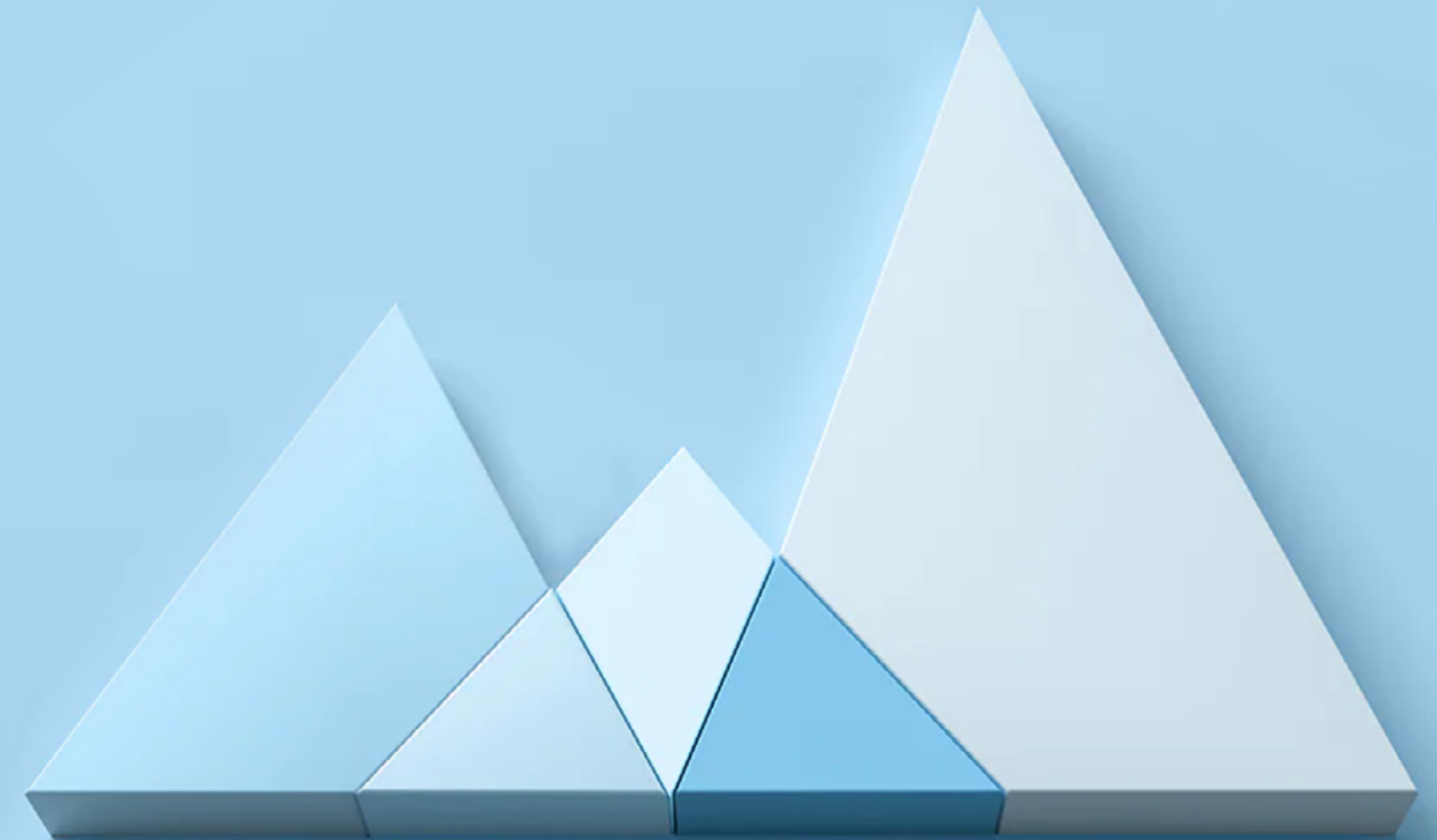


E-BOOK

# Supercharge SAP performance with NetApp and Intel

Speed operations, optimize data agility, and deliver SAP HANA transformation



# Contents

1. The case for evolution: SAP and NetApp	2	➔
2. Nine reasons your SAP applications should run on NetApp	4	➔
3. NetApp in action: CONA services	6	➔
4. NetApp in action: HANSA-FLEX	7	➔
5. Summary	8	➔

As the world recalibrates to the new normal, companies are accelerating infrastructure and application modernization and future-proofing their operations.

Companies need a modern infrastructure and flexible data management so that they can stay agile and keep abreast of the competition.

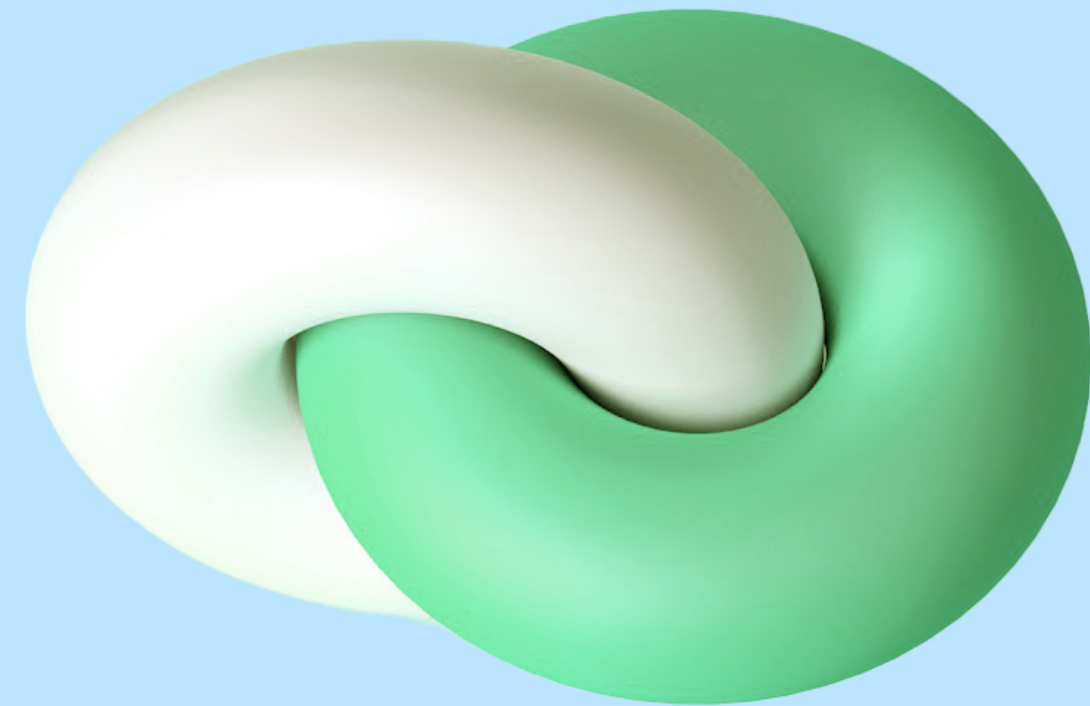
NetApp and Intel offer superior, high-performance solutions for companies looking to address their SAP evolution toward HANA migration both on premises and in the cloud.

# The case for evolution: SAP and NetApp

Wherever you are on your journey with SAP, there's a good chance that optimization, modernization, or migration is on your agenda—or will be soon.

The impact of the COVID-19 pandemic, reconfiguration of supply chains, growing data volumes generated by digital transformation, and the need to make decisions about SAP HANA are just some of the factors motivating organizations to consider the costs and benefits of their existing SAP ecosystem.

NetApp has been collaborating closely with SAP for over 20 years. Our products and services help SAP customers make their business applications more efficient, generate insights more rapidly, and speed up reaction times. Our storage hardware underpins SAP HANA Enterprise Cloud, SAP's private cloud managed service. We're also the only provider of file services certified to support SAP HANA in both Microsoft Azure and Google Cloud.



We contribute to the SAP ecosystem in three key areas:

1

### Optimizing existing SAP ERP Central Component (SAP ECC) environments

We can help you increase the responsiveness of your SAP applications by up to 40% and slash space and power requirements in the data center by up to 90%.

2

### Simplifying and securing SAP HANA operations

We offer best-in-class tools to keep SAP HANA running, including nondisruptive maintenance and zero-touch failover.

3

### Maximizing the opportunities of cloud migration

Making the transition to SAP HANA can be a complex undertaking, and storage plays a critical role. NetApp can help you build a data fabric that speeds migration, reduces costs, and minimizes risks.

Whatever the case for SAP evolution in your organization, it's important to have the right storage partner to help you move forward, on premises or in the cloud. NetApp has the products and services to help, and can leverage the right partnerships to get you to your destination.

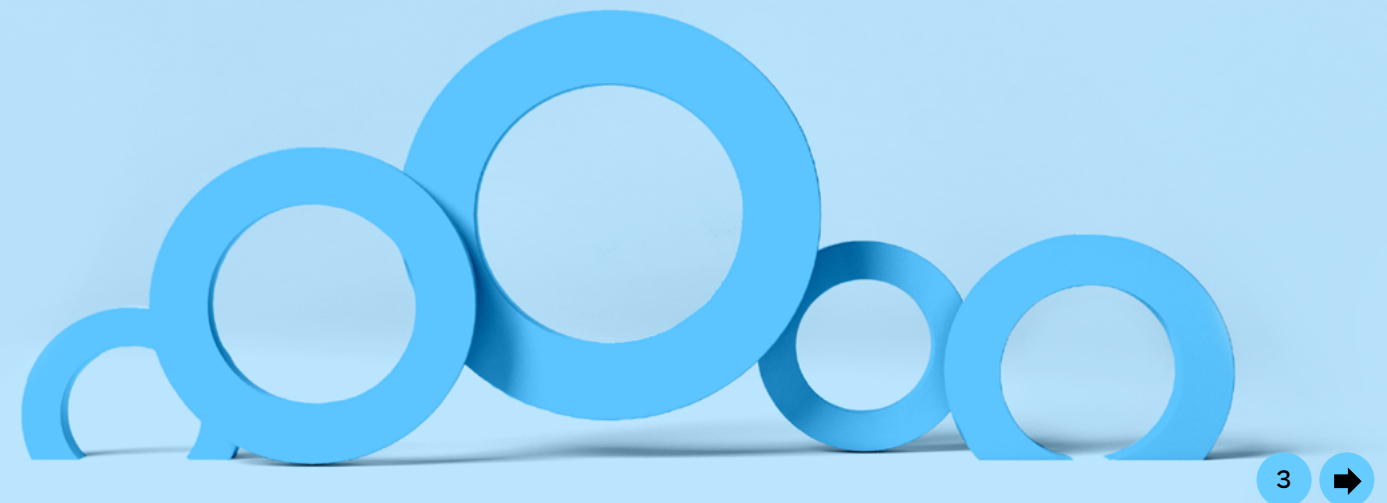
# NetApp: Powered by Intel

NetApp and Intel have worked together for over two decades, improving data center efficiency and reliability to handle any workload or usage. NetApp® solutions powered by Intel Xeon accelerate processing for mission-critical business.



## Together, NetApp and Intel deliver:

- ✓ Breakthrough performance
- ✓ The highest reliability and uptime
- ✓ High availability, protecting data through power disruptions and failover
- ✓ Support for diverse, mission-critical, and data-demanding workloads
- ✓ Faster storage workloads with improved throughput



# Nine reasons your SAP applications should run on NetApp



## 1. Data fabric freedom: fully future-proofed

Build your data fabric with [NetApp ONTAP®](#) data management software, which standardizes data management (and movement) across cloud, on premises environments, and edge devices. It speeds up deployment and operates as the foundation for agile evolution. Today, you can manage your existing ecosystem, including SAP. Tomorrow, you'll be free to add new services (such as multiple clouds) or implement changes of posture—like changes in data protection laws, database migrations, or a new location for SAP applications.



## 3. Fail-safe backup

Save up to 90% in time and effort compared to traditional solutions with our cloning, rapid backup, and restore functionality. NetApp Snapshot™ copies create in-place backups of your SAP data in minutes without creating a new database copy, avoiding any potential impact on performance. Both [Azure NetApp Files](#) and [NetApp Cloud Volumes Service for Google Cloud](#) run NetApp infrastructure, protecting against node failure in your cloud-based SAP production environments.



## 2. Deliver projects 8 times faster

The modern enterprise is all about accelerating time-to-value. The quicker your SAP installation can deliver insights, the more agile your business becomes. NetApp Cloud Volumes for use with SAP takes advantage of our flash storage, driving extremely high performance with ultralow latency. NetApp speeds deployment with automation and allows you to provision shared file volumes in the cloud in seconds.



## 4. Data protection

[NetApp Cloud Data Sense](#) is a data monitoring tool that discovers, classifies, and helps protect personal information. It works with on-premises and cloud storage systems, including Cloud Volumes ONTAP for AWS, Azure, and Google Cloud, Azure NetApp Files, as well as MySQL, PostgreSQL, Oracle, Microsoft SQL Server, SAP HANA, MongoDB databases, OneDrive, and on-premises ONTAP clusters. With NetApp solutions, you can keep your data compliant no matter where it lives or moves.



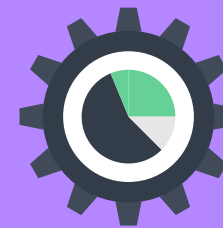
## 5. Cost effective

We're also dedicated to lowering TCO by radically improving storage efficiency. Fully documented case studies testify to our ability to reduce data footprints— on premises and in the cloud—by anywhere from 50% to 85%, depending on the client and the context.



## 7. Faster migration

With NetApp solutions, your company can bring its SAP systems to market up to 40% faster and speed migration to any public cloud. At the heart of this effort sit services such as [Azure NetApp Files](#), which allows enterprise applications to migrate complex, performance-intensive applications to the cloud—and run them when they're there.



## 8. Automated integration with tools you use

One of the legacies of our long-term relationship with SAP is a broad range of NetApp solutions that work well with familiar tools like SAP Landscape Management (LaMa) and the SAP HANA cockpit. Seamless integration keeps the learning curve under control.



## 9. Platinum partner

As one of SAP's most strategic global partners, NetApp offers solutions based on certified designs that include converged infrastructure options. You get all-flash performance, plug-and-play deployment, and industry-leading scalability.



# NetApp in action: CONA services

CONA Services is the IT platform for Coca-Cola's bottling business in North America. The organization services 500 separate bottling plants, which generate aggregate revenues of \$24 billion annually.

Coca-Cola distributors move a lot of product daily. With such huge volumes of data and constant fluctuations in demand, CONA needed a cloud solution that could handle the heavy lifting. The need to understand new patterns of customer behavior amid the unprecedented circumstances of a pandemic was the deciding factor: CONA needed better, faster data, because every sale mattered.

It took several innovative contributions—from Microsoft, NetApp, SAP, and CONA's own IT team—to orchestrate what would become one of the world's largest SAP HANA cloud migrations.

Francesco Quintero, CONA's CTO, says: "The reason for our migration was the promise of cloud, which was greater flexibility, greater stability, and lower cost. It was a big bet for us."


The bet paid off. The move to Azure using Azure NetApp Files helped CONA dramatically improve its agility. According to Anand Ramakrishna, Microsoft VP of Engineering: "CONA is able to much more rapidly generate insights from global data."

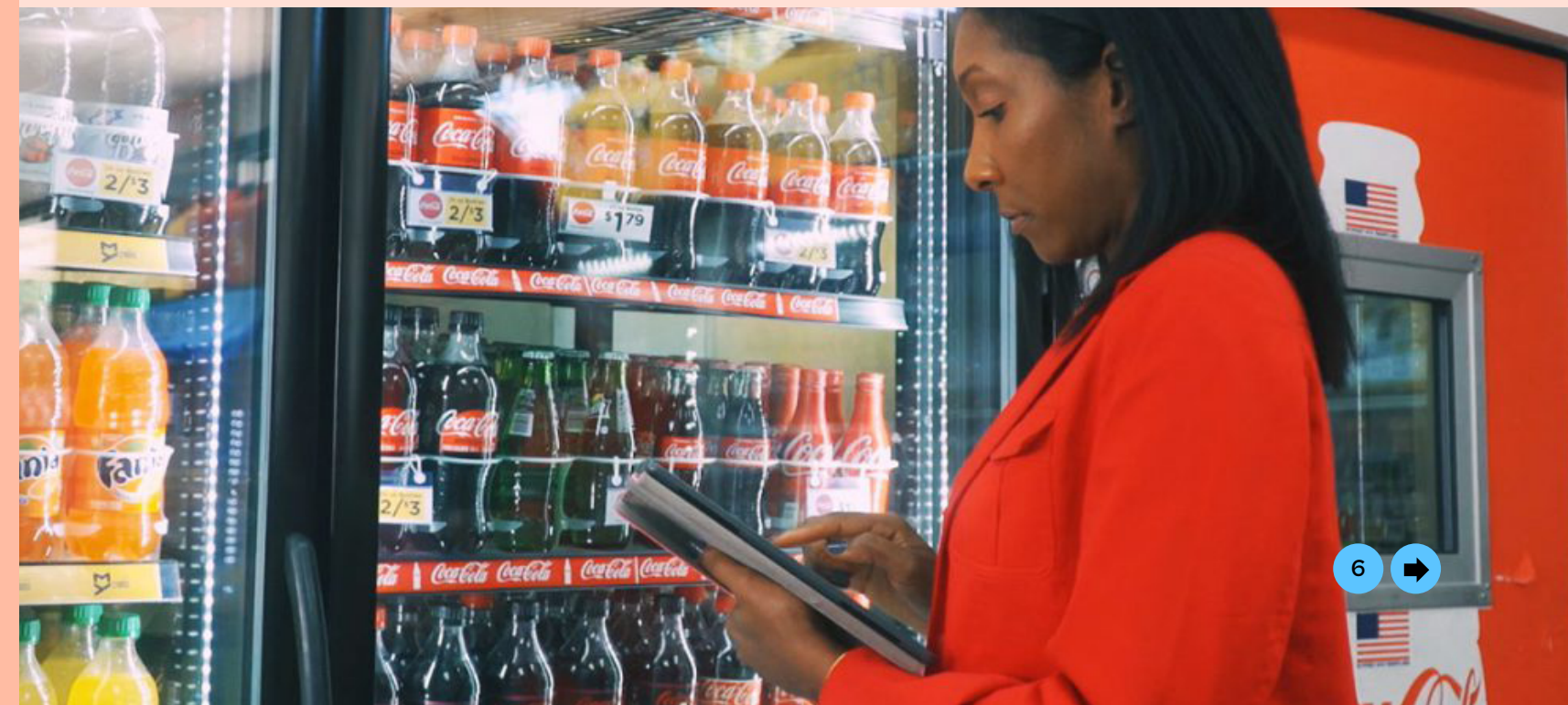
One of the keys to CONA's successful cloud migration was how Azure NetApp Files, a native Microsoft Azure service, provided a simple, fully managed service to support the migration and optimization of SAP's operations. Azure NetApp Files allowed SAP to keep its costs down, while maximizing performance by reducing the data footprint and speeding up data migration.

Uday Reddy, CONA director of digital transformation, says: "Our operations rely on data. Running less HANA nodes means lower runtime costs for our big SAP investments."

## Benefits

Azure NetApp Files helps to manage huge data volumes generated by billions of dollars in beverage sales, allowing CONA to quickly scale IT infrastructure to take advantage of rapidly changing business conditions.

 **To learn more about NetApp's work with CONA services, read the case study**





# NetApp in action: HANSA-FLEX

HANSA-FLEX is a German family-owned hydraulics business with over 160,000 customers and operations in more than 40 countries worldwide.


HANSA-FLEX, a supplier of high-specification hydraulics components, realized that its self-operated on-premises data center at its headquarters in Bremen, Germany, was under pressure. The need for improved security, resilience, scale, and agility made Microsoft Azure its preferred destination in the public cloud.

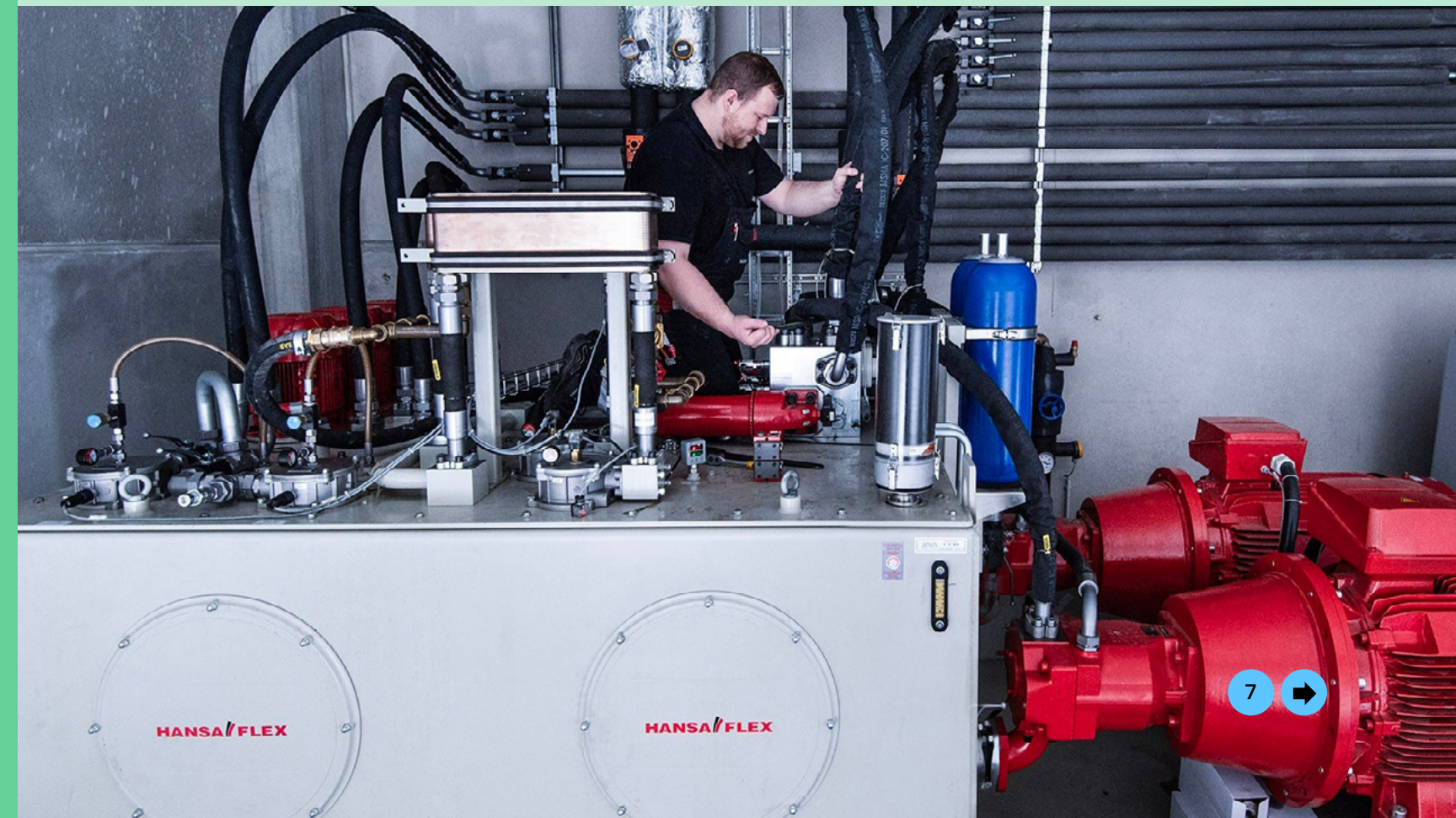
A 30-person project team set out to upgrade the company's 20 SAP systems and migrate them to the cloud. The biggest challenge was a 10TB IBM Db2 database that stored 80,000 material master datasets. The key to the migration was Azure NetApp Files, a Microsoft service built on NetApp technology that simplifies the job of running demanding file workloads in the public cloud.

HANSA-FLEX retired its on-premises AS/400 machines, shifted its data to Azure, and updated its entire SAP ecosystem from R/3 ECC in just 3 months. Thanks to Azure NetApp Files, the database took up just one-third of its previous space requirements after migration, allowing the company to save on storage hardware. Because of the scalability of Azure NetApp Files, backup was greatly simplified and the company no longer needed to juggle multiple drives.

## Benefits

- ✓ Lightning-fast implementation
- ✓ 60% reduction in database size

 **To learn more about NetApp's work with HANSA-FLEX, read the case study**





# NetApp: Your partner of choice for SAP evolution

In fast-changing and unpredictable commercial environments, data is the key to comprehending any kind of change. That's our heritage. It's also a great starting point from which to develop products and services that can radically improve the performance of SAP environments.

For enterprises running SAP, NetApp brings two highly attractive characteristics to the table: over 20 years of collaboration with SAP and a substantial track record of innovative cloud solutions.

Well before software became as important as hardware in the storage business, we understood the importance of usability and efficiency. Today, our objective is to become a bridge between on-premises environments and the cloud. We aim to bring the simplicity and flexibility of the cloud into enterprise data centers, and to bring the sophistication of enterprise data services to the cloud. Across this bridge, traffic flows both ways. NetApp's industry-leading solutions enable this transition in a way that delivers maximum benefit for SAP's worldwide customer base.

## Learn more:

**NetApp SAP Solutions**



**10 reasons your SAP applications belong on NetApp**



### About NetApp

In a world full of generalists, NetApp is a specialist. We're focused on one thing, helping your business get the most out of your data. NetApp brings the enterprise-grade data services you rely on into the cloud, and the simple flexibility of cloud into the data center. Our industry-leading solutions work across diverse customer environments and the world's biggest public clouds.

As a cloud-led, data-centric software company, only NetApp can help build your unique data fabric, simplify and connect your cloud, and securely deliver the right data, services, and applications to the right people—anytime, anywhere.

To learn more, visit [www.netapp.com](http://www.netapp.com)



© 2021 NetApp, Inc. All Rights Reserved. NETAPP, the NETAPP logo, and the marks listed at [netapp.com/TM](http://netapp.com/TM) are trademarks of NetApp, Inc. Other company and product names may be trademarks of their respective owners. NA-756-1221

