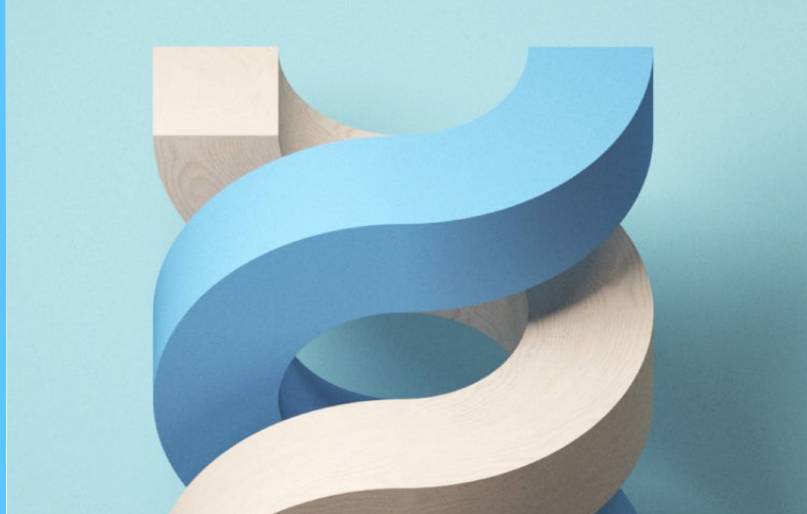


Top 5 reasons to run Windows workloads on Google Cloud



NetApp and Google Cloud have formed a strategic alliance providing an integrated, fully managed file service for Google Cloud with enterprise file storage features. Migrate Microsoft Windows workloads to Google Cloud with minimal changes and know your data is secure and available 24/7.



1

40% cloud infrastructure savings

Save time and money with Cloud Volumes over using standard Windows instances for file shares.



2

90% reduction in snapshot times

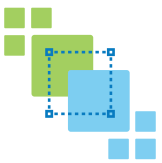
Improve data availability and reduce snapshot times from hours to minutes.



3

99.99% uptime

Guaranteed service level monitoring 24/7 improves customer experience.



4

Be more efficient

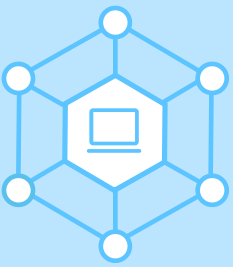
100% improvement in flexibility: Shrink volumes up or down, and change performance tiers dynamically. Provision new volumes in seconds.



5

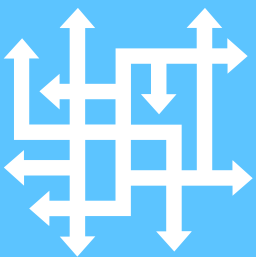
100% peace-of-mind

Simplify Windows operations with Cloud Volumes Service, which is integrated into Google Cloud's user interface. No infrastructure is required to manage or update.



Key workloads we enable:

- Complex, file-based enterprise applications
- Global scale virtual desktop infrastructure (VDI)
- CRM, ERP, SAP-based applications
- Google Cloud VMware Compute (GCVE)



Customer pain points – Reasons to modernize Windows workloads

1. Managing Windows IaaS environments in the cloud is complex
2. Inefficient usage of server and storage resources
3. Data availability issues
4. Poor performance accessing data
5. Data replication and backups cause poor recovery times

“Impact is disrupting traditional affiliate marketing by bringing automation to enterprise partnership management. Cloud Volumes Service for Google Cloud Platform has enabled us to develop an agile and flexible enterprise grade platform for our customers with ease and simplicity. In turn, this has allowed us to enable customers to improve the full partnership lifecycle and optimize revenue.”

- Roger Kjensurd, CTO Impact

