

# Cloud storage is our specialty, nice to meet you.



## In a world full of generalists, **NetApp** is a specialist

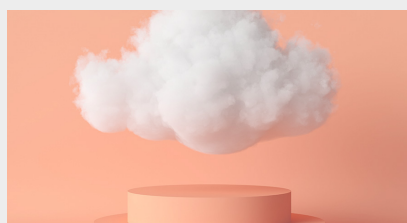
We are relentlessly focused on helping you get more out of cloud than you ever thought possible. Whether on premises, in the cloud, or anywhere in between, no one integrates, secures, and connects your storage like NetApp does.

## It's your cloud, your data, your business...are you ready for the next step?



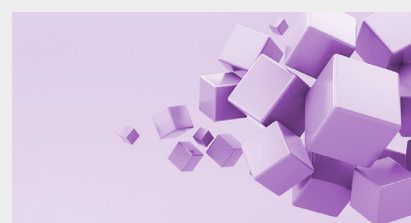
### **Cloud innovation**

Elevate your cloud quickly and easily with our ever-evolving portfolio of services. Just bring your own cloud. We'll bring the automation, dynamic tiering, infrastructure and compute monitoring, security, speed, high availability, and more. [cloud.netapp.com](https://cloud.netapp.com)



### **Data in hybrid cloud**

Deliver a consistent, game-changing experience with data services that work across your choice of public clouds, private clouds, virtual machines, and microservices.



### **Digital transformation**

Modernize and simplify your on-premises environment with all-powerful, all-flash storage arrays that provoke innovation, amplify cost-saving efficiency, and power private clouds at scale.

## Why NetApp?

- ★ Long-standing leaders in storage technology
- 👥 Cloud specialists—secure, high-performance cloud storage and automated cloud infrastructure
- ⚙️ Tools that do it all—connect, protect, monitor, and analyze data
- 📊 Proven knack for running business-critical apps in the cloud
- ☁️ Flexible options, like an a la carte menu for on-prem and beyond

## Customer stories

### **School District of Palm Beach County**

Gets an A+ in managing student data.

### **Miami-Dade County Public School District**

Optimizes operations and the learning experience for 345,000 students.

### **Syracuse University**

Streamlines operations and pushes the boundaries of physics discovery.

### **Yale University**

Harnesses the power of hybrid cloud through NetApp's portfolio.

### **CU Boulder, Laboratory for Atmospheric and Space Physics**

Uses auto-tiering to help collect, manage, store, and distribute some of the largest data sets in the world.