



Technical Report

Active IQ Unified Manager: Best practices guide

Jacob John Andathethu, NetApp
May 2021 | TR-4621

Abstract

NetApp® Active IQ® Unified Manager is the most comprehensive product for managing and monitoring NetApp ONTAP® systems. The need to support various installation platforms, infrastructure scalability, and deployment scenarios creates such a complex list of requirements that one configuration might not fit all. This document outlines basic deployment and best practice guidelines for Unified Manager. The document is for users who are already familiar with the fundamentals of NetApp ONTAP and Unified Manager.

TABLE OF CONTENTS

Introduction	4
Architecture	4
Active IQ Unified Manager architecture	4
Active IQ Unified Manager architecture (earlier versions)	5
Sizing guidelines	6
Challenges to providing scaling precision	6
Scale Monitor	7
Scale guidance strategy	9
Scale Monitor events	12
Installation guidelines	13
Selecting the right platform	13
Resource allocation	15
Planning your MySQL space	16
Unified Manager backup	17
Defining a custom backup path	18
Defining a custom backup location	18
Database backup best practices	18
Prerequisites for selecting a different backup location in RHEL/CentOS and Windows	19
vApp backup	19
Backup and restore using Snapshot on Linux operating system	19
Backup and restore using Snapshot technology on Windows operating system	20
WFA pairing guidelines	20
WFA pairing best practice	21
Deployment guidelines	21
Where to find additional information	21
Unified Manager videos	21
Technical reports and documentation	22
Blogs	22
Version history	22

LIST OF TABLES

Table 1) Configuration recommendation for each Unified Manager instance	9
Table 2) Resource recommendations for Unified Manager 9.9.	10

Table 3) Resource recommendations for Unified Manager 9.7 & 9.8.....	11
Table 4) Resource recommendations for Unified Manager 9.6 and earlier versions.	11
Table 5) Management Station events.....	12
Table 6) Choosing the right platform.	14

LIST OF FIGURES

Figure 1) Active IQ Unified Manager architecture.....	4
Figure 2) Intelligent provisioning with NSLM integration.....	5
Figure 3) Active IQ Unified Manager architecture 7.2 through 9.9.....	6
Figure 4) Management station events.	8
Figure 5) Find All Management Station Events in the Events Management GUI.	8
Figure 6) Scale monitor alerts in Unified Manager 9.5 and lower versions.....	9
Figure 7) Almost Out of Memory event.....	12
Figure 8) New event to measure database behavior.....	13
Figure 9) Identifying the right platform.....	15
Figure 10) Specifying MySQL directory path during Windows installation.....	17
Figure 11) Define the backup path for vApp hosts.	18
Figure 12) WFA pairing with Unified Manager.....	21

Introduction

NetApp Active IQ Unified Manager is the most comprehensive product for managing and monitoring performance, capacity, and health in ONTAP systems through features like events, alerts, performance troubleshooting, capacity reporting, and more. Starting with Unified Manager 7.2, Unified Manager and Performance Manager are available in a single download and a single server.

Because performance monitoring is now fully integrated into the Unified Manager product, OnCommand Performance Manager (OPM) is no longer available as a separate product. NetApp provides a migration tool to copy the historical performance data from OPM 7.1 to Unified Manager 7.2. For more information, see the technical report [Migrating Performance Data to NetApp Active IQ Unified Manager 7.2](#).

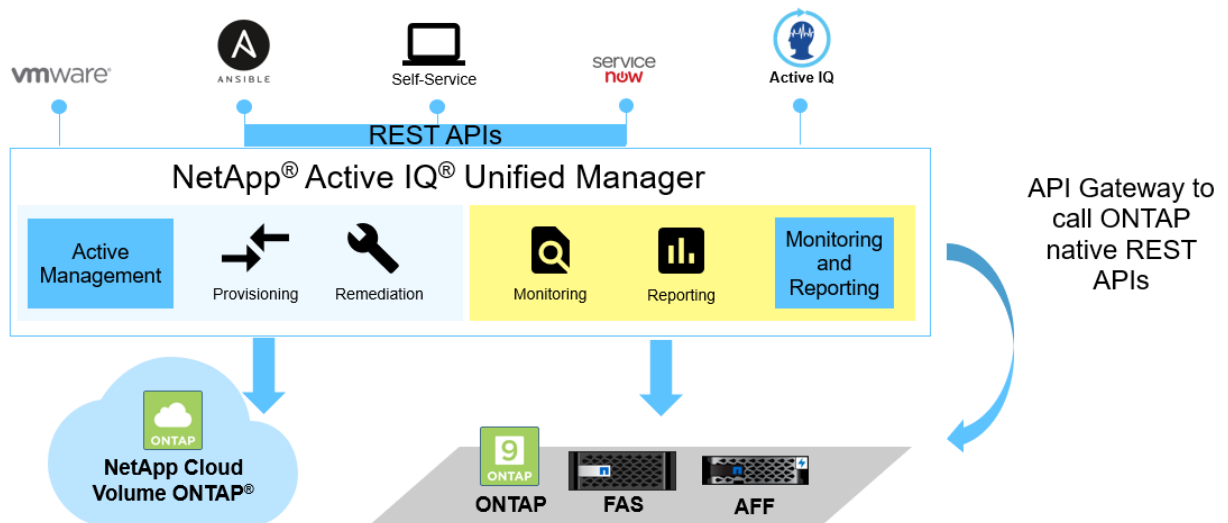
The purpose of this guide is to address many of the design questions you might need to consider when creating an instance of Unified Manager 7.2. If you have a large ONTAP footprint, the proper planning of Unified Manager deployments is essential to help you to scale later.

Architecture

Active IQ Unified Manager architecture

With the release of Unified Manager 9.7, NetApp has introduced several new capabilities in Unified Manager. You can now use Unified Manager to perform active management and intelligent provisioning of your ONTAP fleet across the datacenter with the GUI or automate with any standard tools by using Unified Manager's REST APIs. With several HTML5-based dashboards, security conformance, enhanced risk assessment, and analysis backed by Active IQ's community intelligence and VMware awareness, Unified Manager 9.7 is power packed for the modern data center operations and hybrid environments. Figure 1 shows the various capabilities and third-party integration capabilities you have with Active IQ Unified Manager.

Figure 1) Active IQ Unified Manager architecture.



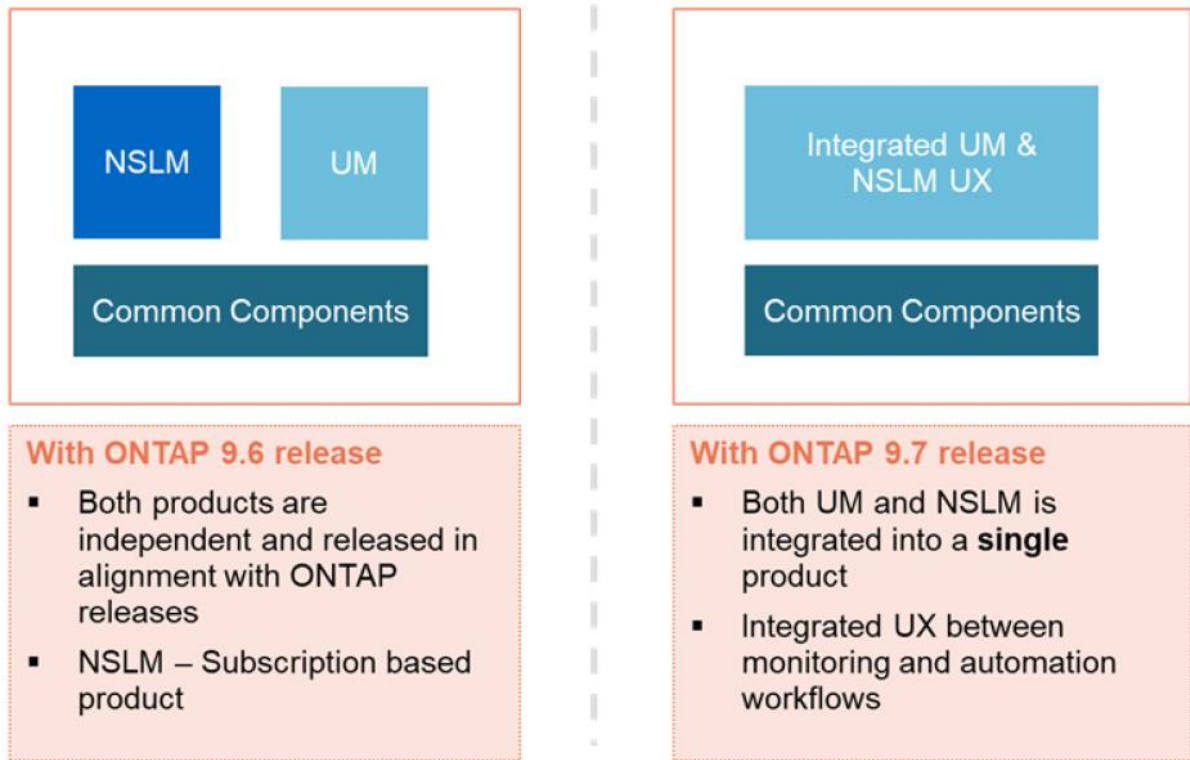
Intelligent provisioning with Unified Manager and REST APIs

NetApp Service Level Manager (NSLM) was a standalone product which enabled you to manage your storage infrastructure based on service level objectives (SLOs). NSLM is automation software that

helps you assign performance service levels to your workloads and allows storage consumption against these performance levels. This results in intelligent provisioning and workload management because storage can be provisioned by users without requiring detailed knowledge of the underlying storage. NSLM is also equipped with SLO-based APIs to provision and monitor storage and platform-specific device APIs for storage management in a data center.

With the convergence of Unified Manager and NSLM in Unified Manager 9.7, each Unified Manager instance has provisioning capabilities along with monitoring. It is a truly unified product with a seamless transition to the new experience and revamped navigation.

Figure 2) Intelligent provisioning with NSLM integration.



Note: End-of-availability (EOA) of NetApp Service Level Manager had been announced in November 2019 and the product is currently under limited support. All the NSLM functionality is available in NetApp Active IQ Unified Manager. Customers are strongly encouraged to use/migrate to Unified Manager to take advantage of the combined functionality of both the products for their complete data-center-wide monitoring and automation needs.

Active IQ Unified Manager architecture (earlier versions)

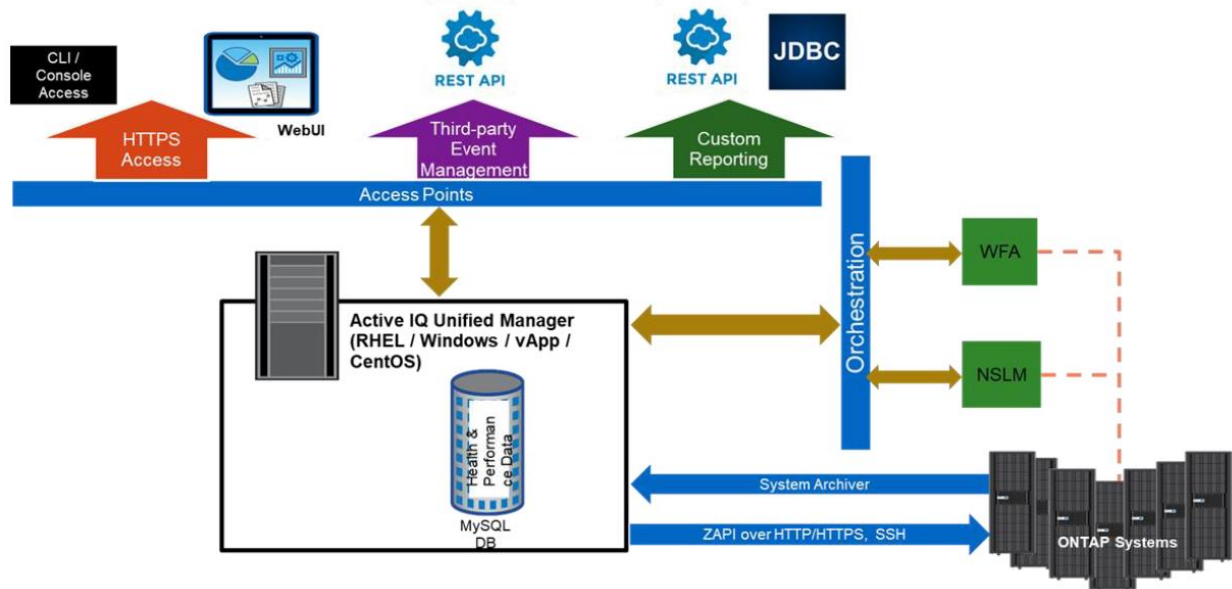
When using Unified Manager, health and performance data is collected into a single unified MySQL database, and health and performance events can be configured from the same interface. Also, you can add user-defined performance alerts from the Unified Manager Alert tab. You only need to maintain one SSL certificate for connecting to ONTAP clusters.

At a high level, Unified Manager software consists of the following four main components:

- **Acquisition unit.** Collects and normalizes configuration, capacity, and performance statistics from ONTAP systems and sends each collected information set to the OCIE server.

- **OCIE server.** Writes the collected ONTAP information into the database. Also provides public interfaces to retrieve the data through EJBs (Enterprise JavaBeans) and sends notifications to listening parties when collections have completed.
- **Unified Manager health and performance.** These components heuristically monitor and analyze all the capacity, protection, and performance-based features of the monitored ONTAP systems and provide the user with visible events, alerts, and reports.
- **Unified Manager UI.** This component presents a friendly, easy-to-use interface for all the features of Unified Manager and the ONTAP systems.

Figure 3) Active IQ Unified Manager architecture 7.2 through 9.9.



Sizing guidelines

There is no one-size-fits-all option for planning compute resources for Unified Manager because every environment is different. Various factors determine resource requirements for each Unified Manager instance. Customers use Unified Manager for various purposes; some people only use the alerting and event functionality, while some use it for operational reporting. Some advanced customers use it for end-to-end monitoring and management of NetApp resources with various integrated solutions, such as Workflow Automation (WFA). List Bullet style.

Note: The items in **red** are beyond the control of Unified Manager for discovery.

Challenges to providing scaling precision

Unified Manager is primarily a monitoring solution. Many resource requirements depend on various factors, some of which are under the control of Unified Manager, and some of which are beyond Unified Manager's scope. This section describes the challenges to providing scale precision.

Note: The items in **red** are beyond the control of Unified Manager for discovery:

- The number of clusters per Unified Manager instance
- The number of nodes per cluster
- The number of each type of storage object (physical or logical) in a cluster
- The number of concurrent Unified Manager users
- The web pages that each Unified Manager user requests

- The external load (for example, WFA)
- Reports generated (on demand or scheduled)
- The ONTAP version for objects managed and collection method
- The time between performance collection periods (5 to 15 minutes)
- Network issues or latency
- The frequency of object configuration changes on the cluster

In addition, load on the cluster also increases the ZAPI response time. This is ONTAP related, so it cannot be discovered by Unified Manager.

Virtual application (vApp) configuration and run time

Note: The items in red cannot be discovered by Unified Manager and are thus beyond its control.

- The amount of actual RAM memory that VMware provides
- The number of CPU cycles provided by VMware
- If the memory and CPU resources are reserved or shared
- Competition from other workloads in VMware
- The underlying storage technology in VMware
- Host OS performance
- Any hardware failures
- Underlying Java Virtual Machine (JVM) used by Unified Manager
- Class libraries and memory efficiency
- Garbage collector behavior with collection times from 20 second to 10 minutes

These factors explain why precision in Unified Manager scaling is challenging; there are so many attributes that are beyond the scope of the Unified Manager instance. The following general sizing rules might help you with your decisions.

Sizing rules

The built-in Scale Monitor feature indicates when to increase resources or stop adding clusters to the Unified Manager instance. The general rule for sizing is to add additional resources (disk, memory, and/or CPU) to your required or planned capacity. The following pointers might help you with your decision:

- Always add additional resources to your planned capacity to allow for growth. This buffer depends on how quickly your environment will grow. Plan to provision least 10% to 20% above your requirements.
- It's always good to oversize, because:
 - Users often don't know their peak loads in advance.
 - Even if you are confident of your Unified Manager capacity, your environment might grow and need more resources.
- Never undersize your disk and memory requirements, always oversize.
- When possible, reserve resources for Unified Manager versus sharing them in virtual environments.

The additional resources required are addressed with Scale Monitor alerts, as described in the next section.

Scale Monitor

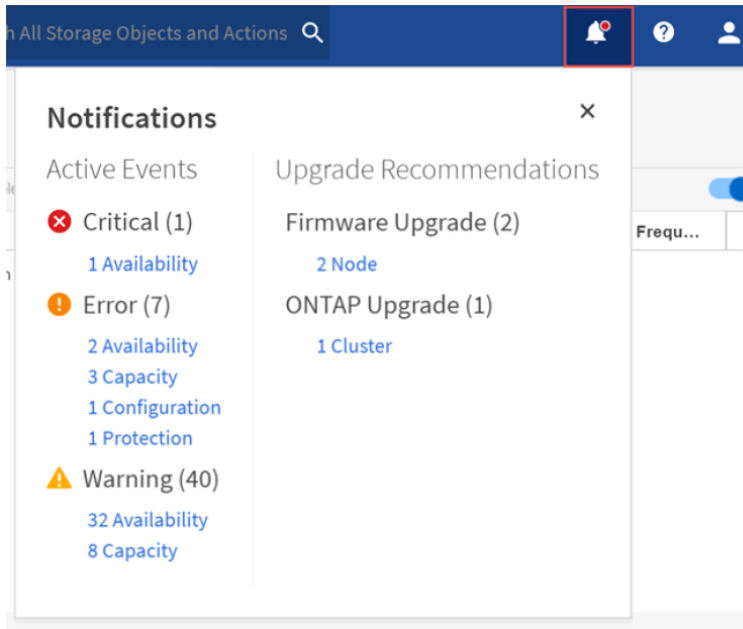
Unified Manager has a built-in Scale Monitor feature that tracks disk and memory usage. This feature can then provide guidance in scenarios where increasing these system resources allows you to scale your Unified Manager instance.

Scale Monitor in Unified Manager 9.7

Starting with Unified Manager 9.7, scale monitor alerts are called as Management Station events and are available in the Event Management view. You can filter all Management Station events to match by using the Source Type as shown below. For details, see the Online Help Pages available with your Unified Manager instance.

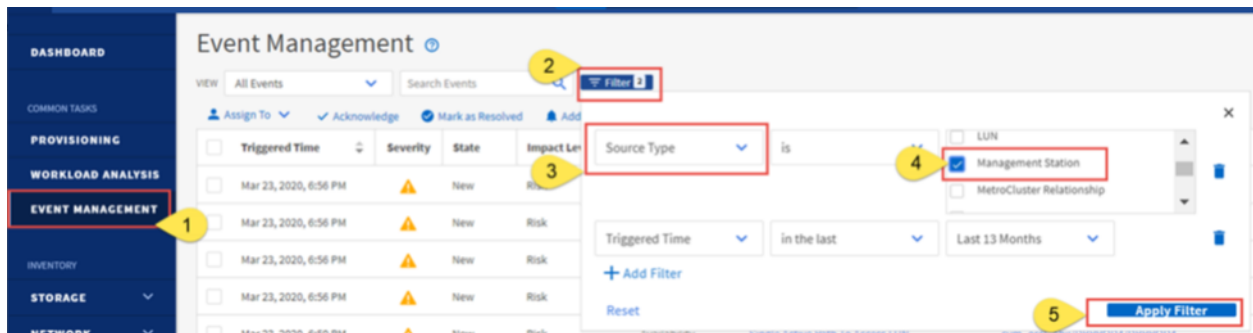
The events are available in the notification bell found in the top right-hand corner of the GUI.

Figure 4) Management station events.



To view all the Management Station events, navigate to Event Management, and apply filter mapping with the Source Type to search for the Management Station.

Figure 5) Find All Management Station Events in the Events Management GUI.



Note: Scale Monitor checks the amount of memory on the machine and partitions it across MySQL and the two Java processes. When users add more memory to the machine, Unified Manager uses it without any other changes on their part.

Scale Monitor in Unified Manager versions prior to 9.6

Scale Monitor offers predefined alerts for monitoring disk and memory, which aids in scaling. The alerts are displayed separately in the top left corner of the screen. Warning events also display a possible remediation step.

Figure 6) Scale monitor alerts in Unified Manager 9.5 and lower versions.



Scale guidance strategy

In the case of larger ONTAP environments, it might take additional planning to determine the appropriate resources for your Unified Manager instance. This section describes some of the guidelines that you can use to plan and deploy your own Unified Manager instance.

As general rules of thumb, consider the following scale strategy for your Unified Manager instance:

- Always overprovision.
- When Unified Manager starts monitoring beyond a 48-node count, rely on Scale Monitor (Management Station) alerts.
- When possible, reserve resources for Unified Manager versus sharing them in virtual environments.

Minimum resource requirements with Unified Manager

To accommodate different configuration and deployment sizes, Unified Manager has no hard limit on the space and memory reservations from version 7.2. This is particularly helpful for customers with smaller ONTAP footprints and those who have an instance deployed on a host with a very small configuration. However, for Unified Manager instances running as a virtualized instance with sizable footprints, NetApp recommends reserving resources (CPU, memory) for best performance, although this is optional. Reserving memory eliminates ballooning, swapping on the host, and ensures Unified Manager runs on physical memory. Users can start with the configurations listed in Table 1.

Table 1) Configuration recommendation for each Unified Manager instance.

Platform	Memory (GB)	CPU	Disk space (GB)
vApp	12	4 vCPUs	400
Windows/CentOS/RedHat	12	4	400

For enterprise customers with scaled environments, you can use the following resource recommendations for planning your Unified Manager instance. These recommendations are best practices; they are not mandatory.

Unified Manager scalability

NetApp has made several improvements in the latest releases with a view to increase the scale numbers further in future releases. If you have a significant number of ONTAP instances managed by a single Unified Manager instance, consider investing in the Unified Manager upgrade process.

Unified Manager 9.9 scalability

Based on performance benchmarking and early adopters' experience with Unified Manager 9.9, customers can now scale up to 250 nodes, as shown in Table 2. If your node count is greater than 250, contact your NetApp account team so that they can help coordinate a review of your environment requirements.

Note: Backup space requirements, such as provisioning three times the space for the `/data` directory, remain unchanged.

Table 2) Resource recommendations for Unified Manager 9.9.

Nodes	RAM (GB)	Disk space (GB)	CPU	Backup space (GB)
Up to 48	12	400	4–8	Note: Space taken by the backup directory also depends on the following: <ul style="list-style-type: none">Retention count.How frequently a full backup is taken; it breaks the ever-growing incremental backup chain.
49–72	60	685	12	
72–150	146	1600	24	
150–200	203	2200	28	
200–250	272	3000	32	
250+	*Contact account team			

* To contact the account team and proceed with the next steps, complete the following tasks:

1. For increased scale requirements, upgrade to the newer releases of Active IQ Unified Manager (preferably Active IQ Unified Manager 9.9).
2. Increase your Active IQ Unified Manager resources to the highest tier. For example, if you are running Active IQ Unified Manager 9.9, increase your RAM to 272GB, disk space to 3000GB, and CPU to 32 cores.
3. Load your current Unified Manager instance with the increased scale count (>250 nodes) that you are looking for. Run the system for at least two weeks and send NetApp a support bundle so they can understand what's happening. This step allows NetApp team members to understand the anomalies that the Unified Manager instance is running into. In parallel, request that your account team raise a Feature Product Variant Request (FPVR) request. While communicating your need to the account team, clearly mention the exact number of node support that you are looking for. After analyzing the support bundle, NetApp might be able to approve the FPVR.

Note: FPVRs are typically approved on a case-by-case basis. Looking at the customer scenario, it might be possible that the increased scale requirement might not work for a single Unified Manager instance, in which case the customer might have to split the Unified Manager instance. For more information about splitting a Unified Manager instance, [see the NetApp KB article here](#).

Note: Beginning in Unified Manager 9.7, the capability to monitor VMware metrics is available. 4,700 VMs were tested in a standard Unified Manager 9.7P1 and in the above configuration.

Unified Manager 9.7 and 9.8 scalability

Based on performance benchmarking and early adopters' experience with Unified Manager 9.7 and 9.8 customers can now scale up to 150 nodes, as shown in Table 3. If your node count is greater than 150, contact your NetApp account team so that they can help coordinate a review of your environment requirements.

Note: Backup space requirements, such as provisioning three times the space for the `/data` directory, remain unchanged.

Table 3) Resource recommendations for Unified Manager 9.7 & 9.8.

Node Count	Memory (GB)	Disk space (GB)	CPU	Backup space (GB)
Up to 48	12	400	4–8	Three times/data Note: Space taken by the backup directory also depends on the following: <ul style="list-style-type: none">Retention count.How frequently a full backup is taken; it breaks the ever-growing incremental backup chain.
49–72	60	685	12	
72–150	146	1600	24	
150+	Upgrade to Unified Manager 9.9 (recommended), or do one of the following tasks: <ul style="list-style-type: none">Follow Scale Monitor guidanceDeploy multiple instances.			

Note: Beginning in Unified Manager 9.7, the capability to monitor VMware metrics is available. 4,700 VMs have been tested in a standard Unified Manager 9.7P1 and above configuration.

Unified Manager 9.6 and earlier versions

Table 4) Resource recommendations for Unified Manager 9.6 and earlier versions.

Node Count	Memory (GB)	Disk space (GB)	Cores	Backup space (GB)
49–72	Rely on Scale Monitor to tell you when Active IQ Unified Manager requires more resources.	Rely on Scale Monitor to tell you when Active IQ Unified Manager requires more resources.	12	Three times MySQL DB space
72+	Upgrade to Unified Manager 9.7 (recommended) or: <ul style="list-style-type: none">Follow Scale Monitor guidance (or).Deploy multiple instances.			

For example, if the MySQL directory (`/opt/netapp/data`) space is set to 150GB, the backup space should be set to 450GB (three times the MySQL data space).

Notes:

- If you plan to create Unified Manager backups, configure your backup destination to have three times the consumed primary data (`/opt/netapp/data`) space.
- You can mount a LUN or NFS share on the backup path. This creates two advantages:
 - The database has more space to accommodate growth.
 - Because backup files are hosted on a storage server, they are safe from accidental VM outage.
- In general, 5GB of disk space is required per node for performance data retention. This is a general observation, and actual requirements can vary.

If you need an environment that supports over 72 nodes, upgrade to Unified Manager 9.7P1 or later to take advantage of additional features and scale improvements.

See the [KB article](#) that provides step-by-step guidance on the process for splitting the Unified Manager database for load-balancing purposes.

Consolidating Unified Manager instances

Customers who are running Active IQ Unified Manager 9.6 and later are strongly encouraged to consolidate the Unified Manager instances with the scale improvements added in 9.7P1 and later. For more information about how to consolidate Unified Manager instances, see the NetApp KB article [here](#).

Scale Monitor events

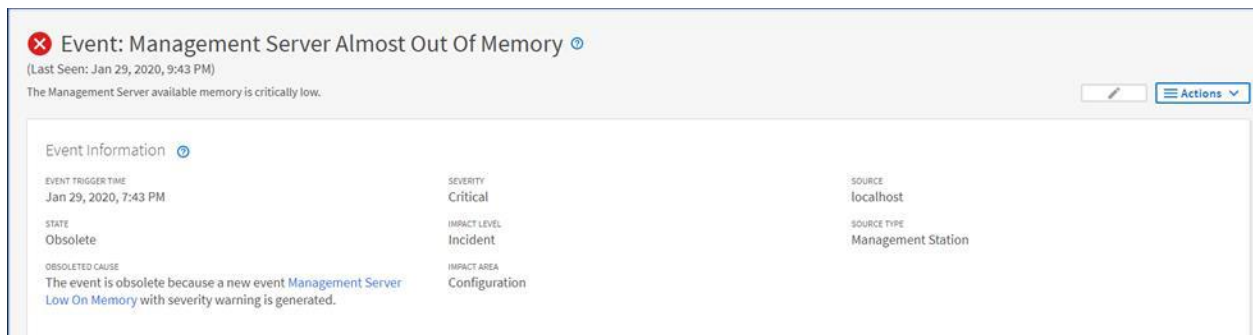
Scale Monitor events can be a useful mechanism for addressing many scale issues. Table 5 lists the Management Station events that are currently available.

Table 5) Management Station events.

Event name	Impact level
Unified Manager Server Disk Space Nearly Full	Risk
Unified Manager Server Disk Space Full	Incident
Unified Manager Server Low on Memory	Risk
Unified Manager Server Almost Out of Memory	Incident
MySQL Log File Size Increased; Restart Required	Risk

Each event provides a recommendation with guidance on the implementation plan, as shown in the example in Figure 7.



Figure 7) Almost Out of Memory event.





Enhancements with Active IQ Unified Manager 9.7P1


Starting with 9.7P1, Unified Manager monitors how frequently MySQL writes to disk and tunes it to optimize writes. Scale Monitor makes these changes automatically and creates a new event in the notification bell when a reboot is required. The new event is shown in Figure 8.

Figure 8) New event to measure database behavior.


 **Event: MySQL Log File Size Increased; Restart Required** 

MySQL log file was too small and it was affecting Management Server performance. The size has been increased from 3094MB to 3191MB to fix the performance issue.

Suggested Actions to Fix The Issue 

- Restart the MySQL and Management Server services to activate this change.

Event Information 

EVENT TRIGGER TIME	SEVERITY	SOURCE
Jun 4, 2020, 9:06 AM	Warning	150-nodes.ONTAP
STATE	IMPACT LEVEL	SOURCE TYPE
New	Incident	Management Station
	IMPACT AREA	
	Configuration	

Installation guidelines

Organizations have requirements for certifying software versions and security updates in their environment. These requirements might force you to decide on a platform to host your software. Before you start a fresh installation of Unified Manager 7.2 or later, you must decide on the platform (vApp, Red Hat Enterprise Linux, CentOS, or Windows) that best suits your environment.

Selecting the right platform

Organizations have different security procedures, patching policies, and regulations that limit the way a product is installed. With Unified Manager, you have the flexibility to install your Unified Manager instance in the platform that best suits your organizational needs. Although there is no significant performance, operational, or functional differences between the three platforms, you should understand how your platform selection affects your operations:

With the vApp distribution, the underlying operating system is locked down behind a network firewall. There is no user access to the file system or to the operating system components. Any updates to the software must be applied through a Unified Manager patch downloaded from the NetApp Support site. Scale might be limited by VMWare's CPU and RAM allocation capability. vApp is an excellent choice for customers who have less need for independent verification and control of software components. Deployments are up and running in a matter of minutes.

With the Red Hat Enterprise Linux and CentOS distribution, the user retains control of the operating system. Any required agents (such as backup, auditing, and so on) can be installed, and the user is free to choose the patch levels for third-party software packages used by Unified Manager, such as Java and MySQL. Users can also patch the server on their schedule. Additional security hardening is possible if it doesn't interfere with required network connections. This is a great option for customers who have very specific corporate security requirements.

With the Windows distribution, customers fully control the Windows server and the environment. They can patch the server and choose to change the versions of third-party components. However, the process is not as simple as on Linux.

Use Table 6 when deciding which platform to select.

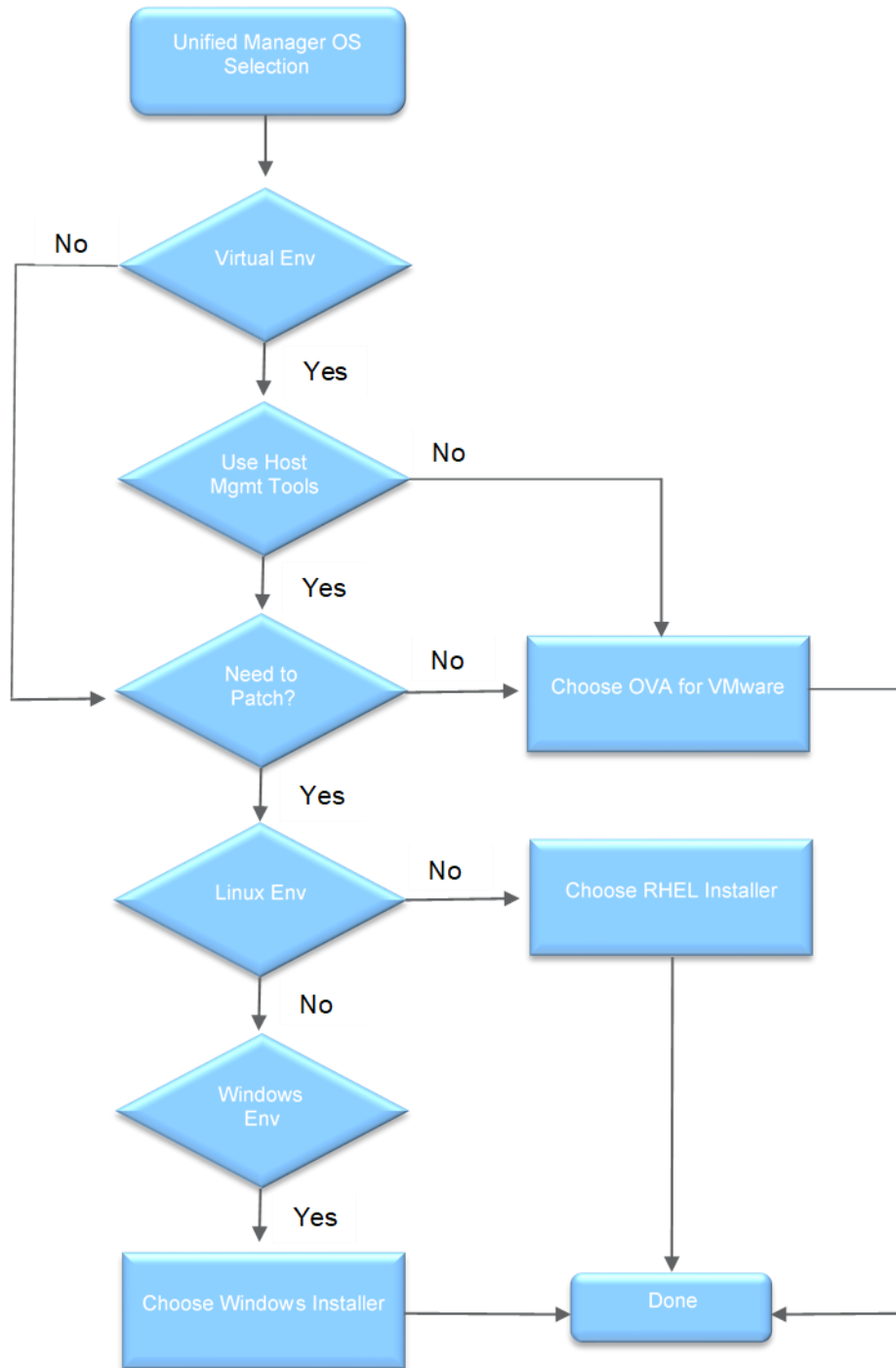
Table 6) Choosing the right platform.

Functional requirement	vApp	Windows (guest OS)	Red Hat/ CentOS (guest OS)	Windows (physical)	Red Hat (physical)
Platform hosting Unified Manager requires regular patching in your environment.	✗	✓	✓	✓	✓
Platform hosting Unified Manager requires OS hardening.	✗	✓	✓	✓	✓
Unified Manager requires a certain software component version. For example, MySQL version 5.7.23 is required but the built-in package in vApp (OVA) is currently 5.7.17.	✗	✓	✓	✓	✓
Unified Manager instance must scale up its resources (memory, disk space) to satisfy new nodes or clusters added.	✓	✓	✓	✗*	✗*
You have delegated management roles in your environment for operations and administrative roles.	✗	✓	✓	✓	✓
You expect to have a higher node count, requiring you to scale your Unified Manager instance vertically.	✓	✓	✓	✗*	✗*

*You cannot auto-scale resources in physical servers directly. You can add resources (memory and disk) only during downtime, provided that your hardware supports extra DIMM and disk slots.

Alternatively, you can use the logic shown in Figure 9 to identify the right platform.

Figure 9) Identifying the right platform.



Resource allocation

With Unified Manager 7.2, there are no reservations on CPU, memory, and disk requirements, which means that the installation is not going to fail because it does not meet the 150GB disk space recommendation. Follow the sizing recommendations in the section “Unified Manager 9.6 and earlier versions.”

Planning your MySQL space

With increasing business needs, your Unified Manager instance needs to scale vertically to monitor and manage additional storage infrastructure. Increasing object counts result in additional space requirements in the `/opt/netapp/data` space, requiring a flexible `/opt/netapp/data` partition that can grow with new resource requirements. You might also have to plan additional space for backups, because the partition is housed under `/opt/netapp/data`. For these reasons, your `/opt/netapp/data` space must be flexible to allow expansion. NetApp recommends the following:

- For RHEL and Windows installations: `/opt/netapp/data` mounted from a LUN for physical installations.
- For vApp installations: Rely on the datastore where MySQL database is hosted.

Note: For large MySQL databases, you can keep the support bundles in a different location than `/opt/netapp/data`. This prevents unnecessary space consumption in the `/opt/netapp/data` space.

To enable your MySQL DB data (`/opt/netapp/data`) to auto-expand, NetApp recommends having a volume manager manage your LUN mount. Requirements for the different platforms are discussed in the rest of this section.

Red Hat Enterprise Linux or CentOS

NetApp recommends mounting `/opt/netapp/data` from a LUN mount for Unified Manager and to use a volume manager to mount it as a filesystem in your host. This gives you the flexibility of adding LUNs for additional disk space while keeping the `/opt/netapp/data` mount constant. You can add multiple LUNs under the same mount point with the help of logical expansion.

If you need to increase `/opt/netapp/data` for an existing Unified Manager instance that is installed on `/opt/netapp/data` mounted locally, complete the following steps:

4. Install an iSCSI adapter in your Linux server.
5. Create a new LUN and map it to the Unified Manager server.
6. Use LVM or a similar volume manager to mount the LUN.
7. Shut down the Unified Manager instance and then copy the entire contents of `/opt/netapp/data` into the new mountpoint.
8. After copying is completed, rename the new mountpoint as `/opt/netapp/data` and bring up the Unified Manager services again.

Plan to mount `/opt/netapp/data` from a separate LUN, and mount it with a volume manager. This gives you the flexibility of granting additional `/opt/netapp/data` space by using volume managers like Linux-native LVM. You can add multiple LUNs under the same mount point with the help of logical expansion.

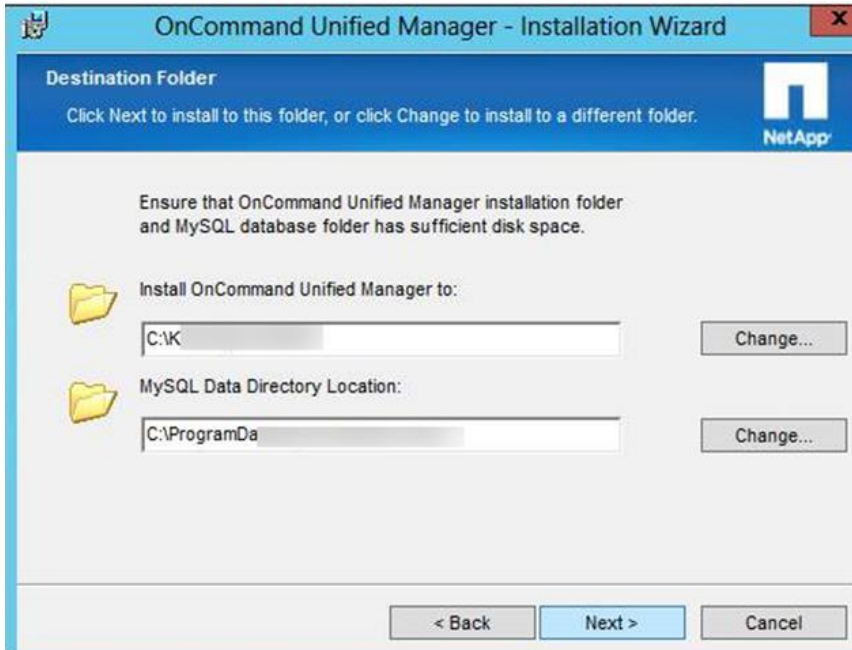
Windows

Always put your Unified Manager data directory in a non-system drive because you cannot expand your system drive. If your system drive is the C drive, do not use the C drive for MySQL data. NetApp recommends mounting a LUN for placing your MySQL data and making the disk dynamic for future expansions as the need arises.

Alternatively, you can have a volume manager offer a non-system drive; you can always add space to this drive for future expansion.

During installation, you can specify where you want to keep MySQL data, as shown in Figure 10.

Figure 10) Specifying MySQL directory path during Windows installation.



Virtual appliances

vApp deployment follows a simple procedure. The underlying datastore helps in auto-expansion; you can always expand the current installation space from the underlying datastore.

To expand the `/data` space, you must first expand the hard disk space at the VM's resource tab and then expand the actual space of the MySQL data partition from the vApp maintenance console.

Note: The underlying datastore should have the extra space required for you to provision the VM in question.

Unified Manager backup

Unified Manager 7.2 and later collects and maintains performance, capacity, and health data in a single MySQL database. When a full backup is triggered, a temporary dump of the MySQL database is created in the backup directory, requiring additional temporary space for every iteration of backup. For each incremental backup, a separate backup file is generated in `/opt/netapp/data/ocum-backup/database-dumps-repo`. Therefore, NetApp recommends configuring the backup space to be three times the size of the MySQL database.

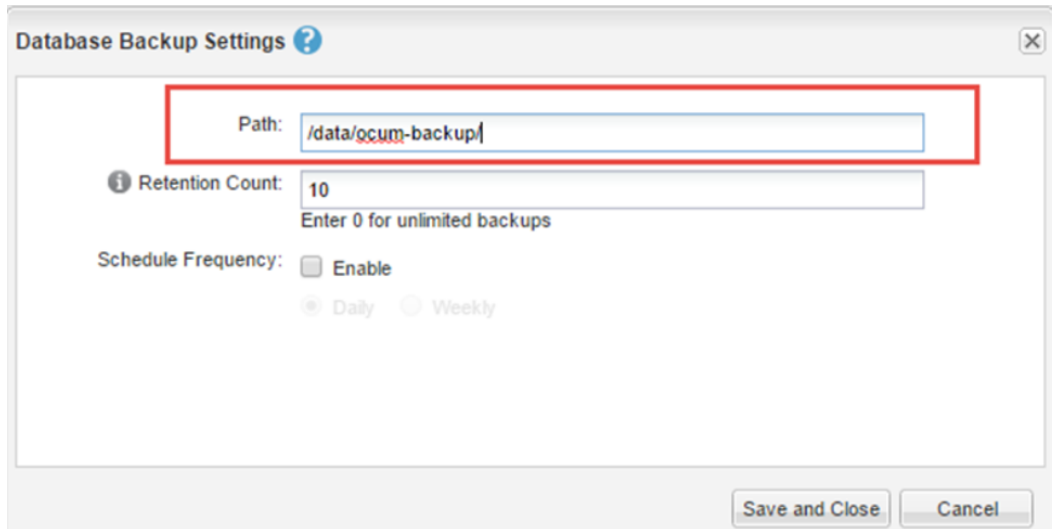
This configuration comes with some additional cost to maintain the temporary space inside the `/opt/netapp/data` space. You should plan to have the backup directory mounted from low-cost storage and from an independent network location for two reasons:

- Having your backups in a different location helps with the recovery of your database when the primary location is unavailable. The primary location for each install platform is different:
 - **vApp:** `/data/ocum-backup/`
 - **RHEL and CentOS:** `/opt/netapp/data/ocum-backup/`
 - **Windows:** Available under `C:\\ProgramData\\`
- The space requirement for backups is three times the size of the MySQL database. Therefore, it is best to store backup data in a different mount point.

Defining a custom backup path

To store your backup data in a different location, define the network path in the backup settings, as shown in Figure 11.

Figure 11) Define the backup path for vApp hosts.



Note: The path shown in Figure 11 is different for RHEL, CentOS, and Windows environments.

Defining a custom backup location

RHEL and CentOS

For RHEL and CentOS, NetApp recommends creating a different backup destination for scaled environments. This allows you to scale your backup as the database grows. For these reasons, you can consider one of the following options:

- Mount your backup on a dedicated mount point like `/mnt/backup`.
- Create a symlink from `<absolute path>` to `/mnt/backup`.

Note: Mounting `/mnt/backup` on NFS is supported, provided that the selinux context is set to `mysqld_db_t`.

Windows install

For Windows environments, NetApp recommends creating a different drive for backups.

Database backup best practices

There are subtle changes and enhancements in the Unified Manager backup behavior in version 9.7 compared to 9.6 and earlier versions.

For additional information and best practices for these versions, see the following KB articles:

- [KB 1087351](#): Incremental backup in Unified Manager.
- [KB 1103608](#): Full backup and incremental backup schedules in Unified Manager 9.7 and later versions.
- [KB 1103565](#): Restore an Active IQ Unified Manager 9.x application backup

For earlier versions, see the following KB articles:

- [KB 1087704](#): Planning an incremental backup chain within Unified Manager versions 7.2 through 9.6.
- [KB 1089470](#): Unified Manager backup and restore best practices.
- [KB 1087324](#): Collecting an OnCommand Unified Manager backup till 9.5.

Note: For vApp instances, the backup recommendations are different, as described in the “vApp backup” section.

Prerequisites for selecting a different backup location in RHEL/CentOS and Windows

For the custom backup location to work, you must reassign ownership of a new backup path to `User:jboss` and `Group:jboss`. For example, in a Red Hat installation, the custom backup directory should have the use group permission set to `jboss:jboss`.

vApp backup

For Unified Manager instances deployed on the vApp instance type, you cannot move data out of the vApp instance. Therefore, NetApp recommends only taking backups with VMware-consistent snapshots.

vApp backup procedure

For Unified Manager vApp deployments, NetApp recommends the following backup procedure:

1. Create a VMware-consistent snapshot.

Note: You cannot move data out of the vApp instance. Taking VMware-consistent backup snapshots is the best way to maintain backups for longer retention periods.
2. For longer retention, take a backup of the VMware snapshot with your vendor-specific backup solution.

Backup and restore using Snapshot on Linux operating system

Active IQ Unified Manager 9.8 has introduced Backup and Restore of the Unified manager database using NetApp Snapshot copies on NFS mounts. If data loss or data corruption occurs, you can restore Unified Manager to the previous stable state with minimum loss of data. You can restore the Unified Manager Snapshot database to a local or remote Red Hat Enterprise Linux or CentOS system by using the Unified Manager maintenance console.

Make sure that the following requirements are met:

- Cluster requirements:
 - ONTAP 9.3 or later must be installed.
 - Clusters should be geographically close to the Unified Manager server.
 - Clusters can be monitored by Unified Manager, but it is not required.
- Storage VM requirements:
 - NFS services must be enabled.
 - The name switch and name mapping must be set to use "files".
 - NFSv4 must be enabled on the NFS server and NFSv4 id domain specified on the client and storage VM
 - Local users are created to correspond with client-side users.
 - Make sure All Read/Write access is selected.
 - Make sure that Superuser Access is set to "any" in the export policy
- Volume requirements:

- The volume should be at least double the size of the Unified Manager `/opt/netapp/data` directory.
- Use the command `du -sh /opt/netapp/data/` to check the current size.
- Set the security style to UNIX.
- Disable the local Snapshot copy policy.
- Enable volume autosize.
- Set the performance service level to a policy with high IOPS and low latency, such as "Extreme."

Backup and restore using Snapshot technology on Windows operating system

From the 9.9 release, Active IQ Unified Manager supports backup and restore operations by using NetApp Snapshot copies on Windows OS with the help of LUN using iSCSI protocol. You should configure your Active IQ Unified Manager system installed on Windows OS to perform backup and restore operations using NetApp Snapshot copies. By default, the backup method is MySQL-based; therefore, you should first configure the Unified Manager backup to the Snapshot copy using the maintenance console.

Note: You should have a dedicated volume and a LUN for the backup configuration. The selected volume should include only one LUN. The size of the LUN should be at least twice the data size expected to be handled by the 9.9 release of Active IQ Unified Manager.

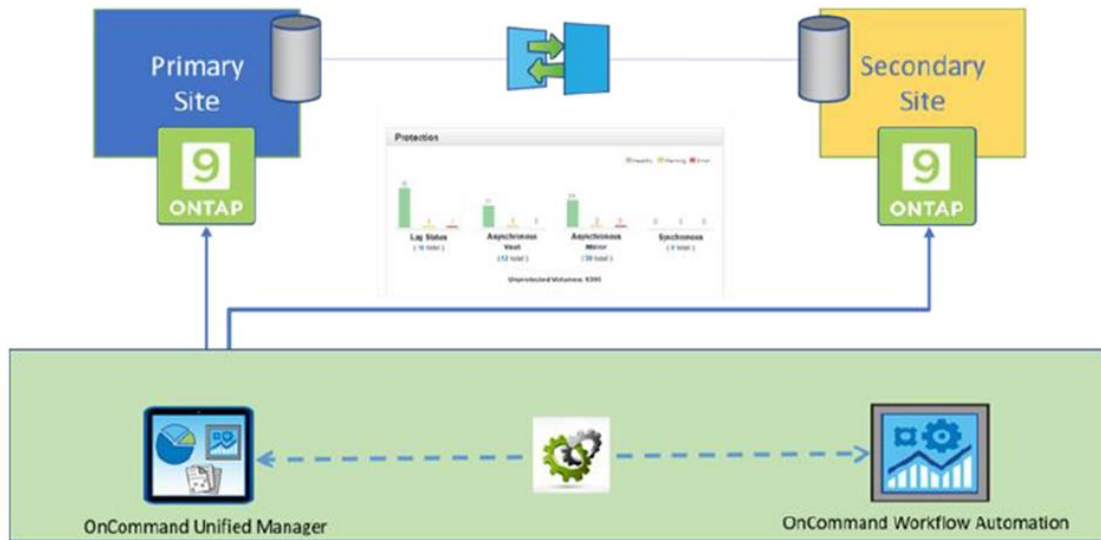
Make sure to perform the following configurations:

1. Configure an iSCSI enabled storage VM or use an existing storage VM that has the same configuration.
2. Configure a network route for the configured storage VM.
3. Configure a volume of appropriate capacity and a single LUN inside ensuring that the volume is dedicated only for this LUN.
4. Configure an initiator group (igroup) in the storage VM.
5. Configure a port set.
6. Integrate the igroup with the port set.
7. Map the LUN to the igroup.

WFA pairing guidelines

You can pair a Workflow Automation instance with a Unified Manager instance as the data source for active management of your protection relationships. By design, the Workflow Automation and Unified Manager instances must be monitoring source and destination clusters involved in protection relationships for active management.

Figure 12) WFA pairing with Unified Manager.



Note: To find versions of WFA compatible with Unified Manager, use the [NetApp IMT Matrix](#).

WFA pairing best practice

As per the best practices detailed under Section 3.3, Unified Manager must be split into two when the instance has more than 72 ONTAP nodes to monitor. This would ideally mean that the Workflow Automation instance now needs to monitor two or more Unified Manager instances as data sources.

In any scenario, NetApp recommends pairing each Workflow Automation instance with Unified Manager so that each WFA instance has access to source and destination clusters in the protection relationship. In addition, each Unified Manager instance acts as a data source.

WFA needs access to source and destination clusters; active management is required on both sides. To find the latest compatibility information for Unified Manager versions with respective WFA instances, please review the [NetApp Interoperability Matrix](#).

Deployment guidelines

Enterprises usually deploy multiple management servers to manage and monitor their data centers. With Unified Manager, you only need one system to manage, provision, monitor, automate, alert, and report on the health and performance metrics of your NetApp systems. If your goal is to monitor all ONTAP resources in every data center with a single Unified Manager instance, you should consider a dedicated management network between sites to make sure that polling updates can be completed without delay. This approach might require consultation with your network experts.

Where to find additional information

To learn more about the information that is described in this document, review the following documents and/or websites:

Unified Manager videos

- [Unified Manager 9.7 overview video](#)
- [Unified Manager 9.6 overview video](#)

- [Unified Manager video channel link](#)
- [Use Case- Active IQ Unified Manager](#)
- [Tech Clip- NetApp Active IQ Unified Manager Customized Reports](#)
- [Tech Clip- What's New with Active IQ Unified Manager](#)
- [Intelligent monitoring and alerting of cloud connected ONTAP with Unified Manager](#)
- [Optimized Event System for Effective Operations Management](#)
- [Simplified Operational Reporting with AIQ Unified Manager](#)
- [Provision Workloads Directly from Unified Manager](#)
- [Analyze Workload Capacity and Performance using Unified Manager](#)
- [Analyze Virtual Machine Performance using Unified Manager](#)
- [Monitor your Storage System Security Compliance with Unified Manager](#)
- [Learn how Active IQ has been Integrated with Unified Manager to Identify Issues](#)
- [BRK-1158-2](#) - Simplify Storage Operation & Automation Using Manageability Suite
- [BRK-1294-2](#) - Storage Lifecycles, Leave it to Unified Manager!
- [DEM-1453-2](#) - Active IQ Unified Manager Demo
- [SPD-1296-2](#) Automate and Integrate with Unified Manager APIs, Intelligently!

Technical reports and documentation

- Migrating Performance Data from Performance Manager 7.1 to Unified Manager 7.2
<http://www.netapp.com/us/media/tr-4589.pdf>
- Active IQ Unified Manager Reporting for NetApp ONTAP
<http://www.netapp.com/us/media/tr-4565.pdf>
- Active IQ Unified Manager Schemas Explained
<https://www.netapp.com/us/media/tr-4709.pdf>
- Active IQ Unified Manager Documentation
<https://www.netapp.com/us/documentation>

Blogs

- [Introducing Active IQ Unified Manager 9.8](#)
- [Self-Managing Storage:Part1 Understanding Active IQ Unified Manager Storage Lifecycle Management](#)
- [Self-Managing Storage: Part 2 Understanding Storage Resource Performance Lifecycle Management](#)
- [Self-Managing Storage: Part 3 Understanding Workload Performance Lifecycle Management](#)
- [Self-Managing Storage: Part 4 Understanding Capacity Lifecycle Management](#)
- [Self-Managing Storage: Part 5 Understanding Security Lifecycle Management](#)
- [Active IQ Unified Manager Backup and Restore using ONTAP Snapshot copies](#)
- [Active IQ Unified Manager 9.8- Custom Reporting Using Excel](#)
- [Using AIQUM management-server/event REST API to View Events](#)

Version history

Version	Date	Document version history
1.0	August 17, 2017	Added best practices for Installation guidelines, sizing, backup, and deployment scenarios for Unified Manager 7.2.

Version	Date	Document version history
1.1	December 18, 2018	<ul style="list-style-type: none"> Added more granular details to scaling guidelines, including case studies. Added WFA pairing guidelines.
1.2	July 2020	<ul style="list-style-type: none"> Added optional resource requirements for scaled environments. Added additional information for Unified Manager instance versions <= 9.6. Added scale enhancements with Unified Manager 9.7. Added best practices for Unified Manager 9.7 and lower versions. Added changes and enhancements done around Unified Manager 9.7 DB backup and restores.
1.3	May 2021	<ul style="list-style-type: none"> Added scale enhancements with Unified Manager 9.9. Added details for backup and restore operations of Unified Manager using NetApp Snapshot copies for Linux Systems. Added details for backup and restore of Unified Manager using NetApp Snapshot copies for Windows systems. Updated "Where to find more additional information" section.

Refer to the [Interoperability Matrix Tool \(IMT\)](#) on the NetApp Support site to validate that the exact product and feature versions described in this document are supported for your specific environment. The NetApp IMT defines the product components and versions that can be used to construct configurations that are supported by NetApp. Specific results depend on each customer's installation in accordance with published specifications.

Copyright information

Copyright © 2021 NetApp, Inc. All Rights Reserved. Printed in the U.S. No part of this document covered by copyright may be reproduced in any form or by any means—graphic, electronic, or mechanical, including photocopying, recording, taping, or storage in an electronic retrieval system—without prior written permission of the copyright owner.

Software derived from copyrighted NetApp material is subject to the following license and disclaimer:

THIS SOFTWARE IS PROVIDED BY NETAPP "AS IS" AND WITHOUT ANY EXPRESS OR IMPLIED WARRANTIES, INCLUDING, BUT NOT LIMITED TO, THE IMPLIED WARRANTIES OF MERCHANTABILITY AND FITNESS FOR A PARTICULAR PURPOSE, WHICH ARE HEREBY DISCLAIMED. IN NO EVENT SHALL NETAPP BE LIABLE FOR ANY DIRECT, INDIRECT, INCIDENTAL, SPECIAL, EXEMPLARY, OR CONSEQUENTIAL DAMAGES (INCLUDING, BUT NOT LIMITED TO, PROCUREMENT OF SUBSTITUTE GOODS OR SERVICES; LOSS OF USE, DATA, OR PROFITS; OR BUSINESS INTERRUPTION) HOWEVER CAUSED AND ON ANY THEORY OF LIABILITY, WHETHER IN CONTRACT, STRICT LIABILITY, OR TORT (INCLUDING NEGLIGENCE OR OTHERWISE) ARISING IN ANY WAY OUT OF THE USE OF THIS SOFTWARE, EVEN IF ADVISED OF THE POSSIBILITY OF SUCH DAMAGE.

NetApp reserves the right to change any products described herein at any time, and without notice. NetApp assumes no responsibility or liability arising from the use of products described herein, except as expressly agreed to in writing by NetApp. The use or purchase of this product does not convey a license under any patent rights, trademark rights, or any other intellectual property rights of NetApp.

The product described in this manual may be protected by one or more U.S. patents, foreign patents, or pending applications.

Data contained herein pertains to a commercial item (as defined in FAR 2.101) and is proprietary to NetApp, Inc. The U.S. Government has a non-exclusive, non-transferrable, non-sublicensable, worldwide, limited irrevocable license to use the Data only in connection with and in support of the U.S. Government contract under which the Data was delivered. Except as provided herein, the Data may not be used, disclosed, reproduced, modified, performed, or displayed without the prior written approval of NetApp, Inc. United States Government license rights for the Department of Defense are limited to those rights identified in DFARS clause 252.227-7015(b).

Trademark information

NETAPP, the NETAPP logo, and the marks listed at <http://www.netapp.com/TM> are trademarks of NetApp, Inc. Other company and product names may be trademarks of their respective owners.

TR-4621-0521