

Powering clients to a future shaped by growth



A Frost & Sullivan Executive Summary

Beyond Infrastructure: SAP Migration to Cloud as a Strategic Imperative

Table of Contents

- 4** Why SAP Should Move to the Cloud
- 5** Challenges of Deploying SAP
in a Hybrid Environment
- 6** Leveraging a Modern Data Fabric
Eases Migration Woes
- 7** Partnering with a Trusted Provider
to Gain the Best Results
- 8** Real-world SAP Migration Results:
Coke One North America (CONA)
- 9** Measuring the Success of Your Migration
- 9** The Last Word

The global pandemic highlighted the need for corporate digital transformation: companies on the journey at the start of the pandemic were better equipped to support business continuity and remote work than those that have not started an IT modernization journey. Digital transformation often starts with easier-to-move applications and services, like email or productivity software. However, core business platforms must be addressed to experience the full transformation benefits. But moving a key software suite like SAP requires more planning than just swiping a credit card to acquire some cloud compute resources and storage. SAP migration requires an understanding of the complete business IT environment, the data that supports SAP applications and the IT foundation that enables operability between the two.

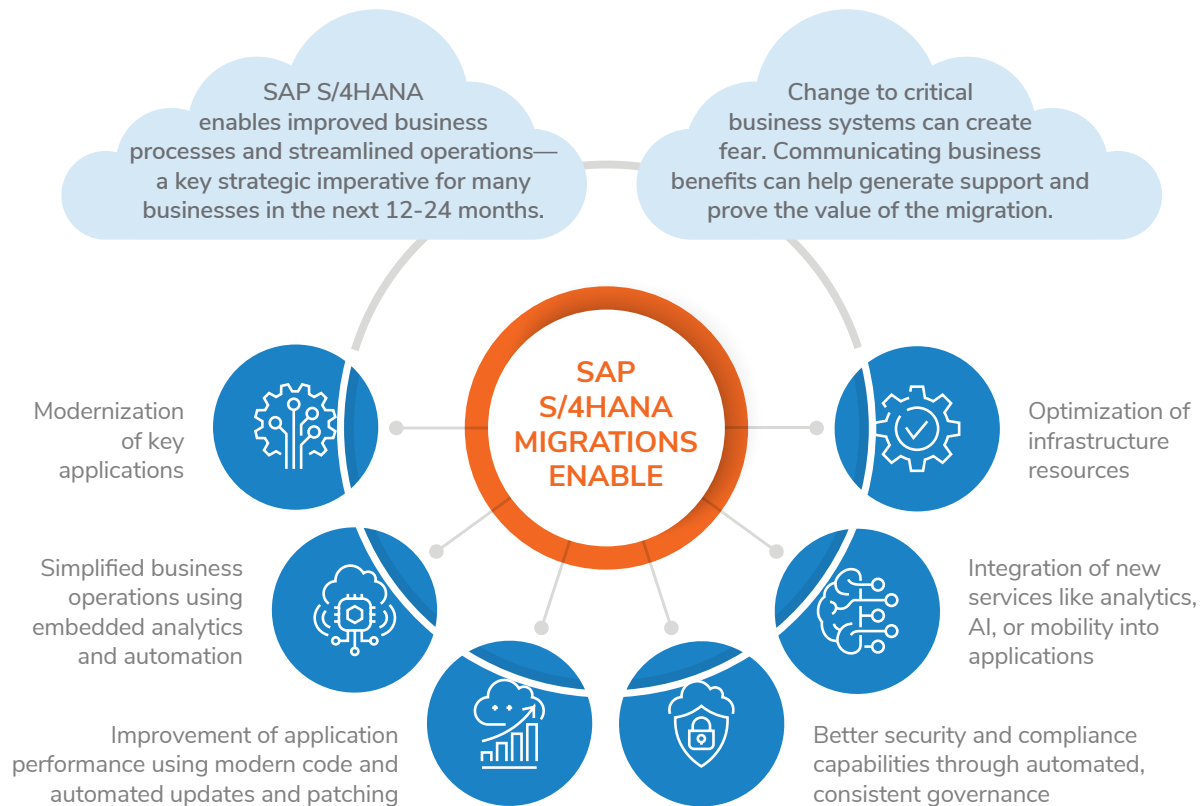
This Executive Summary was derived from a recent webinar with hosts:

- ▶ **DAVID STUMP**
Director of SAP Global Pathways
NetApp
- ▶ **SCOTT MCCULLOUGH**
SAP Solutions Architect
NetApp
- ▶ **KARYN PRICE**
Senior Industry Analyst
Frost & Sullivan

Why SAP Should Move to the Cloud

In the past, such a migration likely entailed a move to a public cloud environment—one in which the business had little purview over the infrastructure tuning or security and thus had little ability to impact the performance, security, or compliance of the application and associated data. But in today's hybrid IT environments, the business can choose to have greater oversight responsibility for their infrastructure, enabling the IT team to ensure that critical thresholds for performance and security are met. In particular, SAP workloads are moving to this type of hybrid cloud environment to gain greater agility and access to advanced services like analytics, artificial intelligence (AI), and machine learning (ML). Moving SAP to a cloud can also provide streamlined business operations, better security and compliance, as well as enhanced application performance.

Driving to cloud-ready S/4 HANA



Challenges of Deploying SAP in a Hybrid Environment

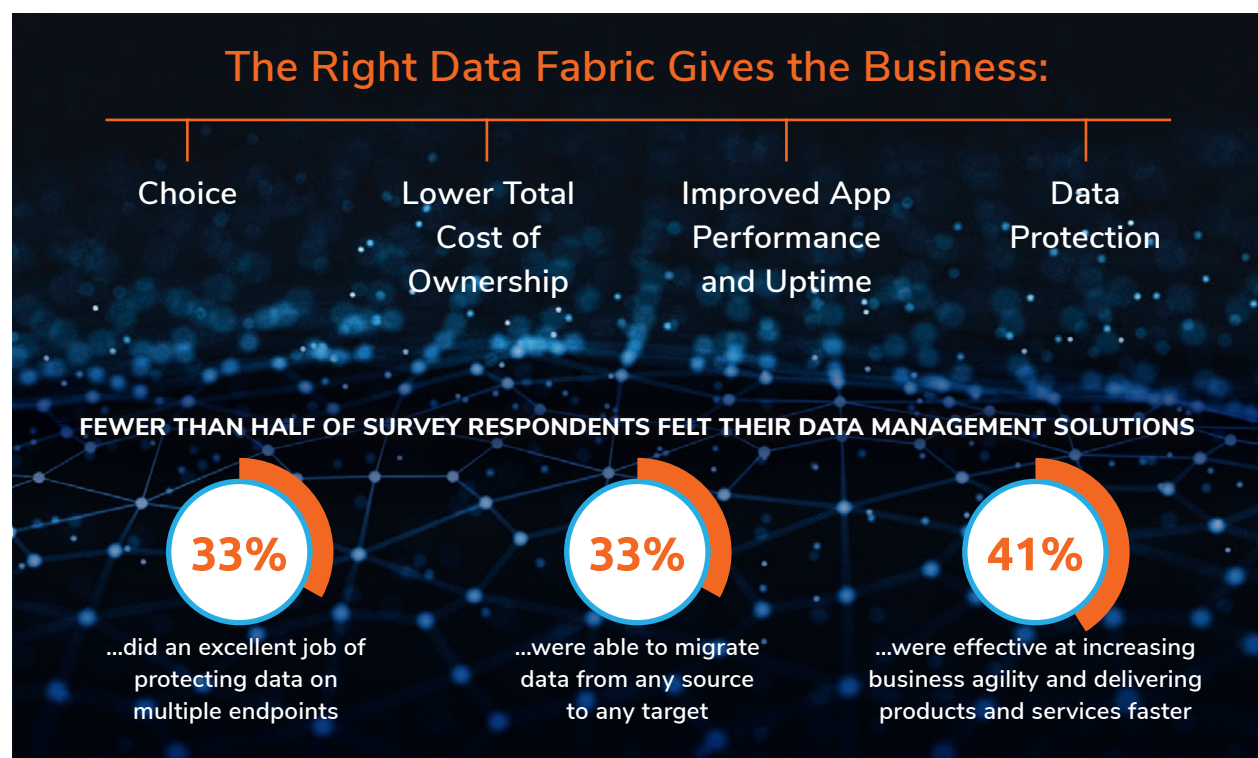
Today's hybrid IT environments come with greater integration struggles, in part because of the potential decoupling of data from the application it supports. Doing so offers benefits of housing the SAP application in one cloud, possibly centralized but accessible by many users; data is housed in a different environment, perhaps with different security and compliance requirements, or placed closer to user locations or clouds where data processing services are located. While offering business benefits of reduced cost and greater agility, ensuring the smooth migration and interoperability of two sets of infrastructures can be difficult.



Common challenges include the “gravity” of data and moving large amounts of information without business disruption; the security and compliance issues arising from protecting sensitive, personal data throughout a migration; and when data moves between sources as it is queried by applications.

Leveraging a Modern Data Fabric Eases Migration Woes

Many businesses are finding that using a modern data fabric helps ease both migration and integration woes. A data fabric is an architecture plus an integrated set of services that offer consistent functionality across multiple endpoints and infrastructures spanning both on-premises data centers and different cloud environments. This type of data platform—or fabric—offers the business simplified data movement and management, even in a hybrid environment. It allows a company to leverage data across multiple infrastructures and use advanced services like analytics, ML, AI, or IoT that have been pre-integrated for easy use within the platform. Data fabrics also typically integrate security and compliance governance to provide cohesive movement, management, and analysis of pooled data, all from a single platform.

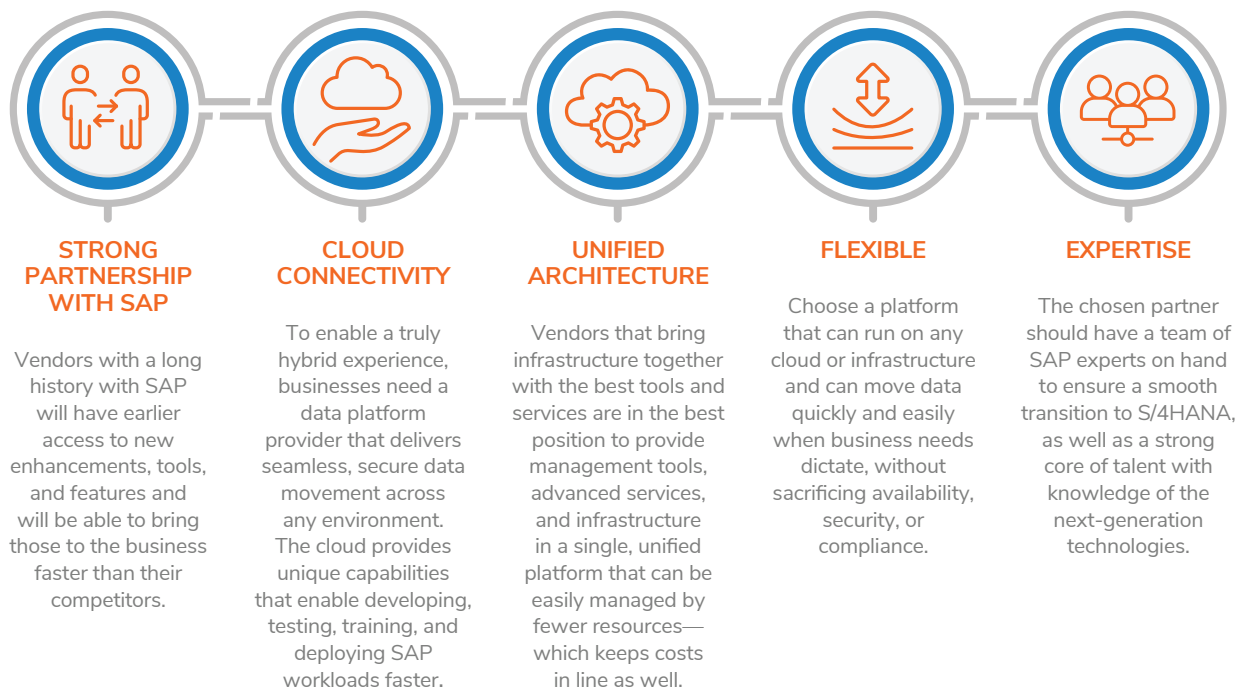


Partnering with a Trusted Provider to Gain the Best Results

Integrating a data fabric into a hybrid IT environment can be challenging, and with the sensitive data that SAP generates, it's imperative to make this switch in a way that protects and ensures the integrity of the data being migrated. As a result, many enterprises choose a trusted partner to help with the journey.

When businesses choose a data fabric provider, they need a trusted partner with an integrated data fabric and the experience of past successful migrations. A strong partnership and tight linkage with SAP will help ensure the success of the business's move to the cloud. NetApp—an SAP partner with a robust data fabric—helps customers speed their data fabric deployment, lower the total cost of ownership, reduce the risk of challenges associated with data migrations, and scale the data fabric deployment up or down as necessary to get the best possible experience in the cloud with the right price point for the business.

What Businesses Seek in a Data Fabric Provider



Real-world SAP Migration Results: Coke One North America (CONA)

Coke One North America is a NetApp customer that has deployed a data fabric with excellent results. NetApp helped the company achieve performance, reliability, data management, and scale required for its hybrid SAP environment, with significant cost savings annually.

- ▶ Azure NetApp Files (ANF) was the only solution that could **deliver the performance, reliability, data management, and scale required**
- ▶ ANF **improved the efficiency, flexibility, and deployment** of SAP systems on Azure vHANA
- ▶ Earmarked to achieve **38% TCO savings** over legacy environment
- ▶ More than **\$1 Million Overall Cost Savings per year**



“NetApp partnered with us in strategy and timeline. We did not feel like this was a vendor-customer relationship. We view the Azure NetApp Files team as a strategic business partner.”

Measuring the Success of Your Migration

Enterprise customers can experience similar results with their SAP data fabric deployments. NetApp experts offer several criteria to measure the success of a deployment, including simplification of the environment. Cost reductions are another indicator of a successful deployment.



The Last Word

Migrating legacy SAP Business Suite to SAP S/4HANA will enable enterprises to be more agile, efficient, and cost-productive. However, the migration must be performed with careful consideration as part of a strategic cloud initiative. As businesses make this critical transition, ensuring that data is available across a hybrid environment is essential to success. Data must be moved without incident and formatted to make it highly accessible across a variety of infrastructures—regardless of where the application is querying. If data migration fails, the disruption to the business can be devastating.

Organizations need a full suite of tools and services to modernize their applications and ensure they can provide the kind of functionality the business expects. Most importantly, they require a data fabric that is flexible and functional, and an expert partner to run it. By choosing a unified data fabric, business leaders can rest assured their data will be accessible, safe, and available—wherever and whenever the business needs it—while gaining the benefits of a simplified environment and, often, significant cost savings.



Frost & Sullivan, the Growth Partnership Company, works in collaboration with clients to leverage visionary innovation that addresses the global challenges and related growth opportunities that will make or break today's market participants. For more than 50 years, we have been developing growth strategies for the Global 1000, emerging businesses, the public sector and the investment community. Is your organization prepared for the next profound wave of industry convergence, disruptive technologies, increasing competitive intensity, Mega Trends, breakthrough best practices, changing customer dynamics and emerging economies?