

# Your guide to prepping your data-intensive VMware workloads for the cloud

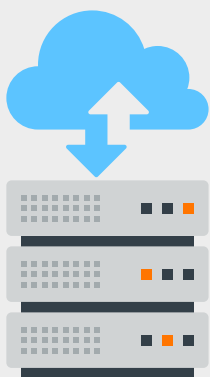


If you haven't gone full speed to the cloud, you're not alone. Only 2% of enterprises have moved data-intensive, storage-demanding workloads to the cloud.<sup>1</sup> The cost, complexity, and operational inconsistencies of cloud migration can create major roadblocks. But if you take a few steps now to prepare your infrastructure, your future cloud migration will go a lot more smoothly.

Do the homework—and pass the cloud-migration test with flying colors.

## Modernize your on-premises digital foundation

When your virtualized infrastructure is updated, upgraded, and upleveled, you can create a truly unified hybrid cloud environment with the same operational experience on premises and in the cloud.



### Your homework:

- Update to the latest version of VMware vSphere.
- Move to all-flash storage for consistent enterprise-class data management on premises and in the cloud.
- Use NetApp® ONTAP® data management software for a consistent architecture on premises and in the cloud, and update to the latest version to access new functionality (including NVMe support).
- Upgrade your hardware to be cloud-ready.

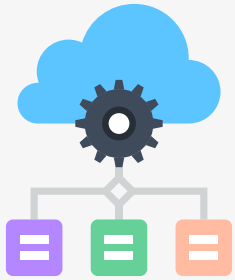
### Extra Credit

- Dip your toes into cloud data services—like NetApp Cloud Insights and NetApp Cloud Data Sense.

<sup>1</sup> IDC Survey Spotlight, What is European Organizations' Attitude Toward Using Public Cloud Services?, January 2022.

## Build an on-premises virtual private cloud

Do you want to experiment with how the public cloud will work best for your business? An on-premises virtual private cloud is a great starting point.



### Your homework:

- Update to the latest version of vSphere.
- Deploy VMware Cloud Foundation.
- Test the cloud for less-critical files.

### Extra Credit

- Try a use case—like DevTest in the cloud.

## Accelerate applications

When you move your enterprise applications to the cloud, you don't need the capital expenditure (capex) investments and management skills that on-premises solutions require. We see major savings in your future.



### Your homework:

- Use Kubernetes for new cloud-native workloads.
- Use ONTAP for a consistent architecture on premises and in the cloud.
- Deploy VMware Tanzu.
- Migrate your enterprise applications to the cloud.

### Extra Credit

- Take advantage of the vSphere hypervisor and ONTAP storage systems already in your on-premises environment.

## NetApp and VMware: your study buddies for cloud migration

When you modernize your data center now, you're setting up your data-intensive VMware workloads for a successful life in your hybrid multicloud future. With NetApp and VMware solutions, you can move your VMware workloads to any of the major clouds: AWS, Azure, or Google Cloud. And you can do it without the time, cost, and complexity of having to refactor your applications first.



### Are you ready to dive in?

Check out our [solutions for VMware](#) and get that infrastructure looking sleek, modern, and cloud-ready.

