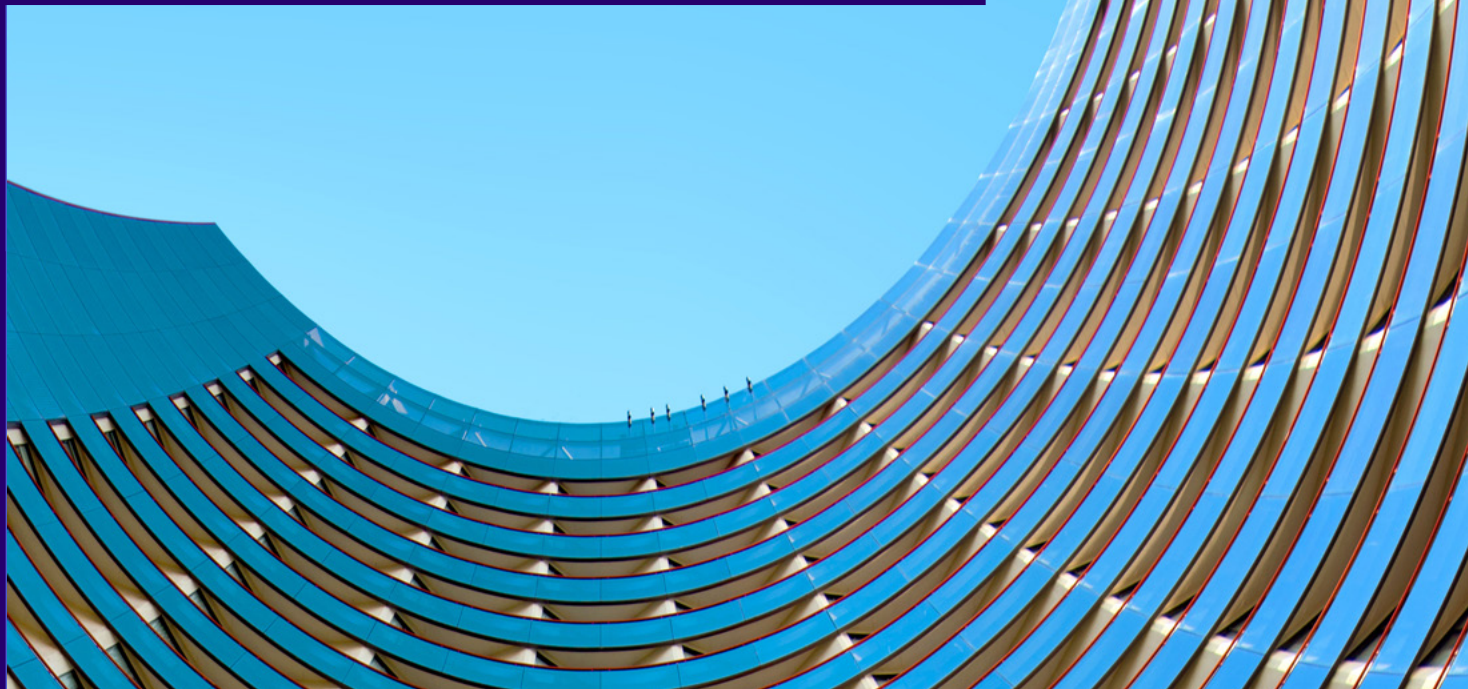


NETAPP CONSOLE

ONE CONSOLE. SIMPLIFIED OPERATIONS. SECURITY FIRST.



Take command of your NetApp Data Services and storage with NetApp Console.

The challenge

Increased complexity, risk, and inefficiency
In today's fast-paced IT environments, complexity is the enemy of efficiency. Organizations with primarily on-premises systems, and beyond, are grappling with growing storage footprints, multiple sites, and diverse workloads that demand constant uptime and peak performance. Fragmented management tools, processes, and interfaces create inefficiency, higher operational risk, and slower response times—at a moment when IT teams are expected to do more with less.

NetApp Console is the answer.

NetApp® Console is built on a restructured and enhanced foundation, encompassing platform investments, core services, enterprise readiness, security, administration and functionality. It is now the intuitive, intelligent, highly secure, and compliant single point of control for seamless management for your NetApp intelligent data infrastructure.

With its re-imagined user interface and experience, managing your NetApp Data Services and NetApp storage has never been more intuitive, smarter, and insightful.

Centralized management interface

NetApp Console delivers one secure login, one intuitive interface, and one consistent interface for all your NetApp systems and Data Services. Centralize management with an easy-to-use control center that integrates NetApp tools for a comprehensive experience—boosting productivity, delivering full resource visibility, and standardizing operations across your ecosystem.

From this centralized, enterprise-ready interface, your administrators can deploy, discover, configure, monitor, and maintain your systems across on-premises and cloud environments—improving agility and maintaining consistent operations.

Console also enables orchestration of ONTAP data protection and resilience, allowing you to activate and manage Data Services that safeguard your data, strengthen cyber resilience, and help control costs across ONTAP systems. Whether in one data center or across multiple sites, NetApp Console delivers increased productivity, smarter operations, faster administration, stronger security, and greater confidence.

To offer seamless control over all your NetApp storage and Data Services, this re-imagined Console makes managing your ecosystem more intuitive, smarter, and insightful, than ever before, with its productive, insightful homepage, automated onboarding and deployments, and an intuitive interface that increases control.



Ready to take command?

This [guided demo](#) will show you the way.

Intelligent, simplified operations

Manual, repetitive processes waste time and increase the risk of mistakes. NetApp Console replaces them with intelligent, guided workflows that accelerate administration, simplifies those processes, and reduces errors and risks. From initial onboarding assistant that gets you operational quickly—covering account association, agent deployment, and marketplace connectivity—to ongoing management, Console is designed for speed and simplicity.

A consolidated homepage with insightful dashboards, quick links, and timely news and information keeps teams focused on business outcomes instead of administrative overhead. Intelligent, automated workflows simplify complex tasks, making administration faster and freeing up time for higher-value priorities.

Built-in consumption monitoring gives you real-time visibility into usage patterns, helping you track costs, identify trends, manage billing, and optimize resource allocation. The dashboards provide real-time visibility into performance, alerts, protection, and resource utilization—identifying any issues or concerns so you can proactively address them before they impact business continuity.

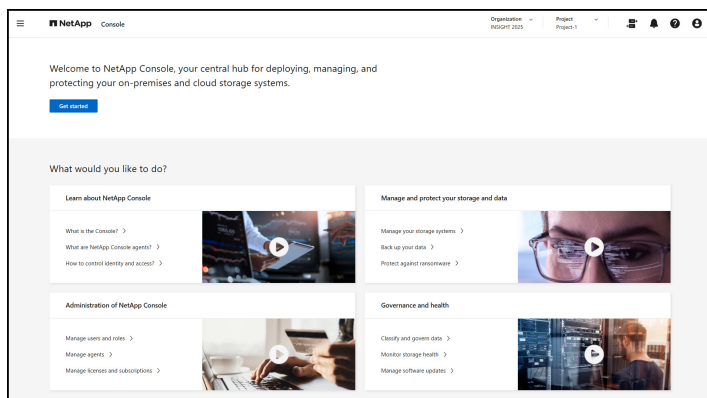


Figure 1: NetApp Console

KEY BENEFITS

- One secure login and one intuitive interface
- No more silos, with seamless control and complete visibility across sites
- Consolidated tools and standardized operations for a consistent way of working
- Smarter operations and simplified onboarding for maximum productivity
- Faster administration for more time for priorities
- Centralized licenses and subscription utilization, management and billing control
- Real-time awareness and proactive resolution
- Verified users—no exceptions, Zero Trust by design
- Compliant now and certified ready
- Secure external partner collaboration enables real-time support



Security-first foundation

Rising threats and compliance requirements demand stronger security. Security is built in from the start—not layered on as an afterthought. NetApp Console is zero trust ready, compliant, enforces identity-first access control, least-privilege permissions, and credential protection. Multifactor authentication and federated identity allow only verified users to gain access, no exceptions.

Console is purpose-built and certified to meet strict compliance and governance requirements—ready for HIPAA, SOC 2, Texas state and local mandates, and more.

Fine-grained access controls and policy-driven boundaries allow your trusted partners to provide real-time support without compromising visibility, authority, or compliance. Read-only modes give safe, nondestructive visibility to users who need to see but do not change anything in your systems. Real-time monitoring and anomaly detection help identify unusual activity early, and comprehensive activity auditing strengthens governance and compliance readiness.

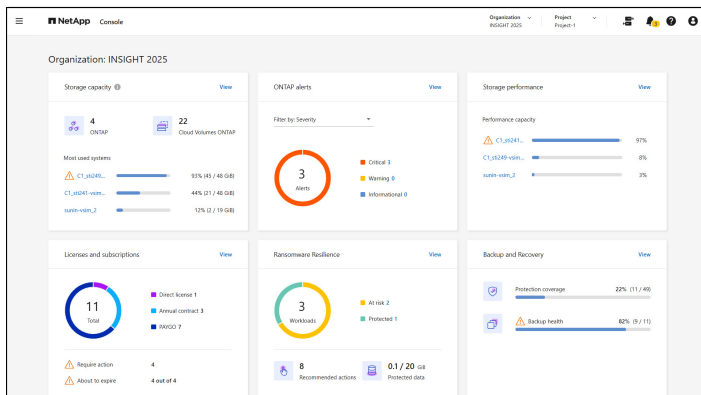


Figure 2: NetApp Console



The result

Enhanced efficiency, security, and strategic focus

When you deploy NetApp Console, the result is faster, more reliable operations, a stronger security posture, and more time for your IT teams to focus on strategic initiatives. Your administrators log in once and have everything that they need at their fingertips. Whether managing a single NetApp ONTAP® cluster or dozens of systems across sites, NetApp Console delivers seamless control, increased productivity, smarter operations, faster administration, stronger security, and greater confidence.



Get started and unlock the power of NetApp Console today.

NetApp Console is more than just a control tool; it is a transformative management plane that centralizes, simplifies, and secures your IT operations. Built for the way you work today—and ready for how you'll scale tomorrow. Take command of your NetApp Data Services and storage. Embrace the future of IT management with NetApp Console—One Console. Simplified Operations. Security First.



Contact Us

About NetApp

NetApp is the intelligent data infrastructure company, combining unified data storage, integrated data services, and CloudOps solutions to turn a world of disruption into opportunity for every customer. NetApp creates silo-free infrastructure, harnessing observability and AI to enable the industry's best data management. As the only enterprise-grade storage service natively embedded in the world's biggest clouds, our data storage delivers seamless flexibility. In addition, our data services create a data advantage through superior cyber resilience, governance, and application agility. Our CloudOps solutions provide continuous optimization of performance and efficiency through observability and AI. No matter the data type, workload, or environment, with NetApp you can transform your data infrastructure to realize your business possibilities. www.netapp.com



© 2025 NetApp, Inc. All Rights Reserved. NETAPP, the NETAPP logo, and the marks listed at <http://www.netapp.com/TM> are trademarks of NetApp, Inc. Other company and product names may be trademarks of their respective owners. SB-4470-0925