

# Top 5 reasons to use Google Cloud NetApp Volumes

01

**Migrate and deploy** critical business applications, as is, to Google Cloud without rearchitecting.

02

**Leverage familiar enterprise** storage services with seamless Google Cloud integration.

03

**Simplify, automate, and manage** storage processes using Google Cloud console, gcloud, Terraform, or APIs.

04

**Gain flexible billing options** and leverage Google Cloud committed use discounts (CUD).

05

**Count on robust data protection** and recovery with NetApp® Snapshot™ technology, integrated backup, and multiregion data protection.



## The challenge

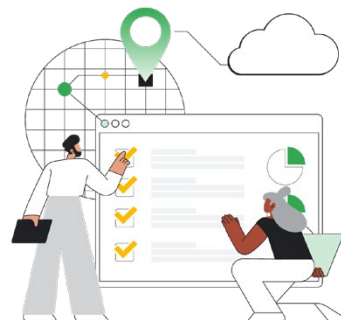
While companies across all industries are using the cloud to grow and innovate, many traditional enterprise applications are still running on premises. To take advantage of the many benefits of the cloud, organizations are forced to modernize applications, acquire new knowledge, and update policies. This approach makes their cloud journey slow, expensive, and complex.

## The opportunity

With Google Cloud NetApp Volumes, you can now run critical traditional and cloud-native applications in Google Cloud without redesigning your code, your processes, or your teams. Easily mount file shares on Google Compute Engine virtual machines and Google Cloud VMware Engine to reference the same shared data. Harness cloud advantages faster and at lower cost. And get peace of mind knowing that your data is always available and secure.

## Key features

- **Fully managed service** with NoOps, integrated with the Google Cloud console
- **Volume provisioning** from 1GiB to 1PiB in seconds
- **Multiprotocol support** for Windows and Linux with SMB 2.1, 3.0, 3.1.1 and NFSv3, NFSv4.1 protocols
- **Instant, automated Snapshot copies** for efficient, effective data protection
- **Integrated backup** provides a fully managed solution for long-term recovery, archive, and compliance
- **Auto-tiering** for cost optimization of infrequently accessed data
- **High performance** with up to 12.5GiB/s for demanding workloads
- **Flex regional service** for business continuity across zonal failures within a region.
- **Asynchronous volume replication** for business continuity
- **High availability** with options for multizone and multiregion redundancy.
- **Rapid cloning** accelerates application development



NetApp Volumes is a fully Google-managed, high-performance file storage service that makes it easier, safer, and more cost efficient to migrate and run demanding enterprise applications and workloads in Google Cloud.”

Addendum, IDC report, “The Business Value of NetApp Cloud Volumes for Google Cloud,” October 2023

## Where power meets simplicity

<p>Quickly migrate applications and run enterprise apps and file services in the cloud</p>	<ul style="list-style-type: none"><li>• Save time and lower risks and costs by eliminating the need to refactor code or redesign processes</li><li>• Automate provisioning and management of data services by using Google Cloud console, gcloud, Terraform, and APIs</li></ul>
<p>Maintain business continuity and keep data secure</p>	<ul style="list-style-type: none"><li>• Protect, repurpose, and easily manage data through Snapshot copies, instant volume cloning, and integrated backup</li><li>• Manage access to sensitive files with secure, granular role-based access control and audit logs</li><li>• Instantly restore data from in-place, near zero-footprint Snapshot copies or use remote backup copies in the event of unplanned data loss, ransomware, or data corruption</li></ul>
<p>Dramatically reduce public cloud storage spending</p>	<ul style="list-style-type: none"><li>• Consumption on demand: scale storage performance up and down</li><li>• Google Cloud pricing model: variable pay for usage</li><li>• Automatically move infrequently accessed data to less expensive storage tiers</li></ul>

### Simplify your cloud journey with Google Cloud NetApp Volumes

Discover more ways that Google Cloud NetApp Volumes makes it easier to migrate and run your business-critical enterprise applications.

[Learn more.](#)

[Google Cloud data management solutions from NetApp](#)

[Google Cloud NetApp Volumes](#)

[NetApp on Google Cloud](#)